



I. VESSEL



1. M/V GLOBAL KOMA berthed at Punta Chungo Port.

II. HOLD CONDITION



2. Hold Nr. 2, general condition of bulkhead/Fwd.



3. Hold Nr. 2, general condition of bulkhead/Aft.



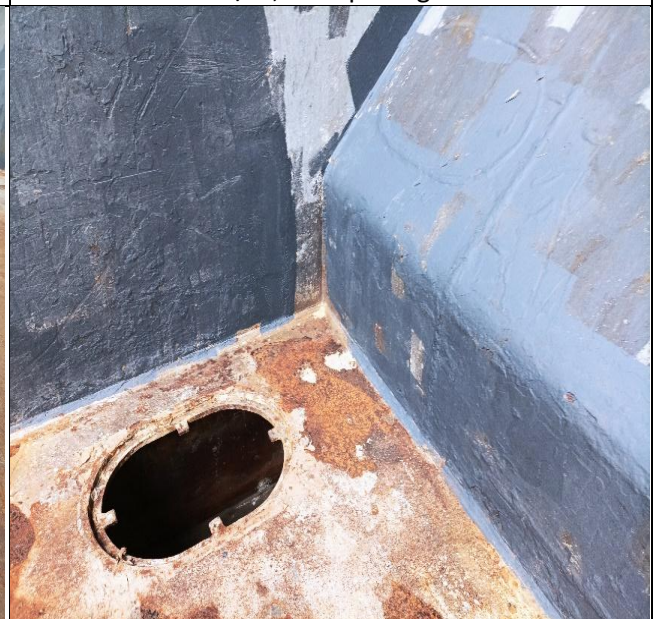
4. Hold Nr. 2/Ps, shell plating condition.



5. Hold Nr. 2/Ss, shell plating condition.



6. Hold Nr. 2, general condition of tank top plating.



7. Hold Nr. 2, bilge/Ps clean and dry.



8. Hold Nr. 2, bilge/Pe covered with burlap and sealed with tape.



9. Hold Nr. 2, bilge/Ss clean and dry.



10. Hold Nr. 2, bilge/Ss covered with burlap and sealed with tape.



11. Hold Nr. 2, stevedores' access with rubber packing in good conditions.



12. Hold Nr. 2, non-return valve.



13. Hold Nr. 2, drain hole conditions.



14. Hold Nr. 2, compression bar in good conditions.



15. Hold Nr. 2, acting cleat.



16. Hatch cover hold Nr. 2, rubber packing condition.



17. Hold Nr. 2, hydraulic system without leaking.

### III. CONDITION OF CARGO



18. View of stockpile warehouse.



19. Copper concentrate inside stockpile prior commencement of loading operation.



#### IV. LOADING OPERATION



20. Ship loader system located in hold Nr. 2.



21. Conveyor belt.



22. Loading operation of copper concentrate in hold Nr. 2 commenced.



23. Loading operation in process in hold Nr. 2.



24. Loading operation completed in hold Nr. 2.



25. Loading operation completed in hold Nr. 2.

#### V. SHORE SCALE



26. Weighing scale before commencing loading operation in hold Nr. 2.



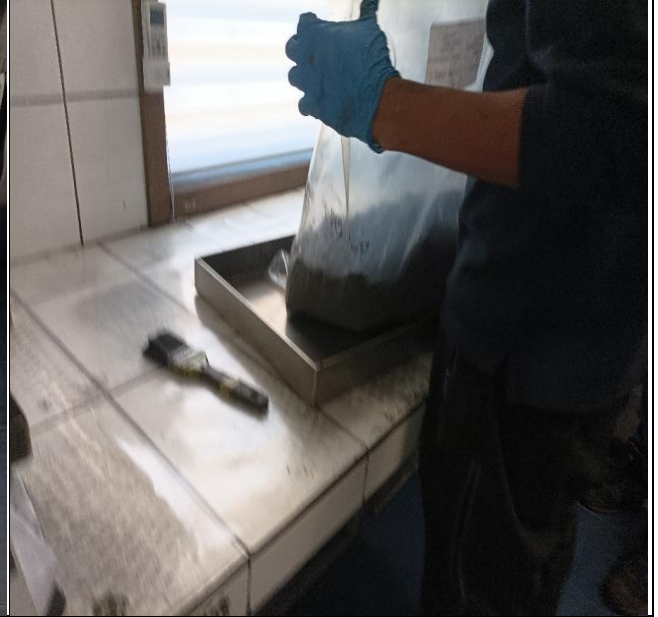
27. Weighing scale after finishing loading operation in hold Nr. 2.



## VI. SAMPLING OPERATION



28. Sample in plastic bag duly labeled and sealed by AHK personnel.



29. Sample in laboratory being poured into a tray of 52 x 60cm.



30. Sample being divided by AHK Lab personnel.



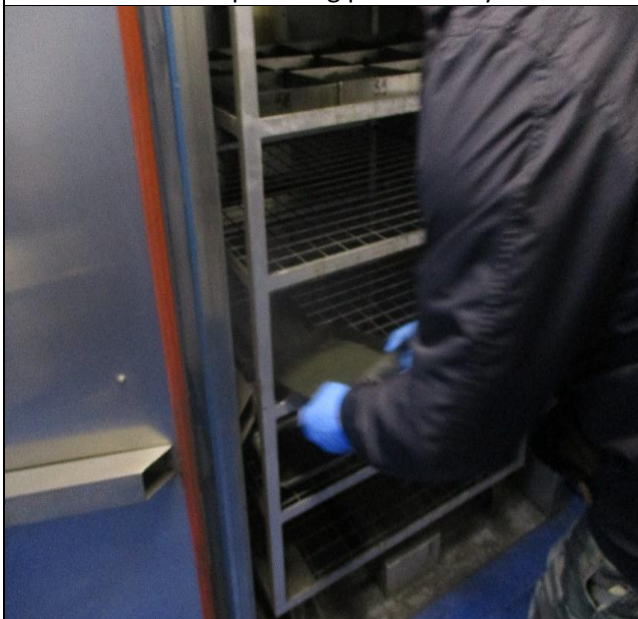
31. Sample divided in 20 square portions for filling the tray.



32. Sample being put into tray.



33. Weighing of tray with sample.



34. Trays being placed into the oven for 5 hours plus 1 hour.



35. Trays with samples into the oven.



36. Oven temperature of 105.0 °C.



37. Sieve in process.



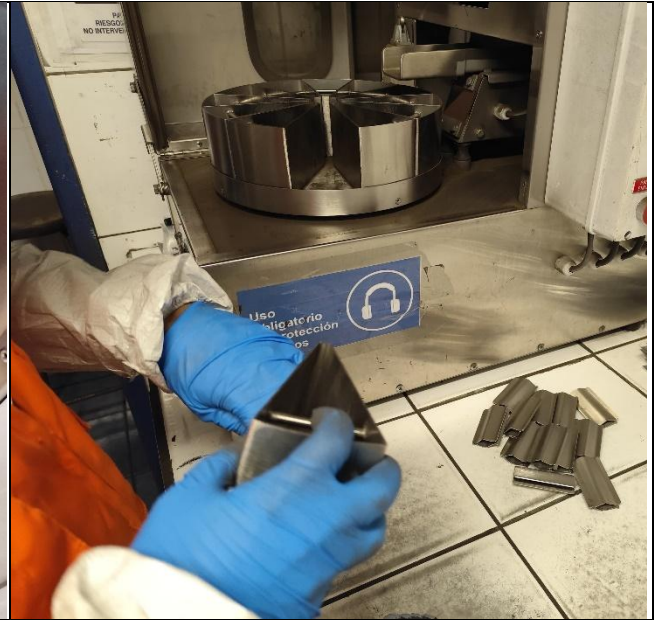
38. Sieve in process.



39. Dried sample being put into automatic divider.



40. Dried sample into automatic divider.



41. Sample being put into aluminium bag.



42. Sample being sealed by AHK personnel.



43. Samples into kraft bags sealed with AHK tape by laboratory personnel.



44. Close up view of bag duly sealed/labelled by AHK personnel.



45. Sample bags being sealed with ALS tape by ALS Surveyor.



46. Close up view of bag duly sealed with ALS tape.



47. General view of samples with ALS tape.



48. Samples in plastic bags to be placed inside carton box.



49. Another view of previous one.



50. Carton box with samples to be dispatched to UK.



51. Carton box duly closed.



06.01.2025

52. Carton box with samples to be dispatched to China.



06.01.2025

53. Carton box duly closed.