



ALS Inspection Chile SpA

Limache 3405, Office 61

Viña del Mar, CHILE

T +56 32 2545 500

Report: ANF-2603-0935

Date: April 22, 2026

This is to certify that we, **ALS Inspection Chile SpA**, at the request of Messrs. **DHL GLOBAL FORWARDING - INDUSTRIAL PROJECTS**, attended onboard and alongside motor vessel:

MV "CONDOR MAGALLANES"



On April 15, 2026, while the vessel laid berthed at Angamos port pier Nr. 4, **PUERTO ANGAMOS/ CHILE**, with the purpose of carry out an:

"ARRIVAL INSPECTION AND DISCHARGE SUPERVISION OF THREE BOILERS"

And report as follow,



1. -SCOPE OF SURVEY:

The present inspection was carried out according to instructions received by **Mrs. Elizabeth Aceituno from DHL Global Forwarding-Industrial Projects** to:

- Carry out an arrival inspection and discharge supervision of three (03) Boilers from MV CONDOR MAGALLANES.

2.- ANTECEDENTS:

2.1.- Ship's Particulars:

Vessel	"CONDOR MAGALLANES"
Owners	MAREVISTA MARITIME III LIMITED
IMO number	9539365
Call Sign	5BPC6
Flag	CYPRUS
Port of Registry	LIMASSOL
Year of built	2011
Vessel type	GENERAL CARGO SHIP
Builder	WUHU XINLIAN SHIPBUILDING CO.LTD
Length overall	161.48M
Breadth	25.21M
Gross tonnage	15426.72
Net tonnage	12969.77
Master name	Mr. BOGUSLAW JANERKA
Chief Officer name	Mr. DENYS STRYZHKOV



3.- TIMES:

DATE	SHIFT	HOUR	DESCRIPTION
April 15, 2026	1°	08:00	Surveyor attended at Angamos Port.
		08:30	Arrival inspection in LH Nr. 2
		14:00	Discharge operation of cargo in LH Nr. 2 commenced
		15:00	End of shift
April 15, 2026	2°	15:30	Surveyor attended at Angamos Port.
		17:00	Discharge operation of cargo in LH Nr. 2 resume
		20:30	Discharge operation of cargo in LH Nr.2 completed
		22:30	End of shift

4.- CARGO DETAILS: (ACCORDING TO BILL OF LADING)

BL Nr.	BREB57433
Shipper	BOSH INDUSTRIEKESSEL GMBH
Consignee	ROBERT BOSCH S.A.
Description	BOILER TAG 2963
Quantity	03
Gross weight	205188.00 KGS
POL -POD	PUERTO ANGAMOS, CHILE



5.- ARRIVAL INSPECTION

The arrival inspection was carried out on April 15, 2026, starting at 08:00 hours. The cargo, consisting of 03 boilers of 68,4 tons each, was found stowed in **LH. No. 2**.

Wooden planks were placed between the boilers and the lower hold plating to prevent cargo displacement. Metallic stopper welded to the lower hold were also fitted for the same purpose.

The boilers were stowed on wooden supports and secured with chains, which were made fast to the lower hold ring bolts.

No signs of cargo displacement were observed.

According to our inspection the follows damages were noted as arrival conditions:

ITEM	SERIAL NUMBER	TYPE OF DAMAGE
Boiler UT-HZ IE	142444	Scratches and external frame dented and rusted
Boiler UT-HZ IE	142443	Frame reinforcement bent



1. Package ID 142444



2. General view of the discharge operation



3. External frame dented, scratched and rusty.



4. Another view of the above



5. Package ID 14243



6. Frame reinforcement bent



5.1.- Discharge supervision:

To carry out the discharge operation of the 03 boilers, a shore crane fitted with marine slings and shackles, made fast to metallic bars, was used. All lifting gear was observed to be in good condition and with a capacity exceeding the cargo weight.

Upon completion of the discharge operation, the equipment used for these maneuvers was handed over to the terminal for use in subsequent vessel discharges involving similar cargoes, as well as during the loading of this cargo onto trucks for transport from Puerto Angamos to its final destination.

5.1.1. Capacity shore crane for discharging operation:

For the discharge operations, a Liebherr MK 400 shore crane with an SWL of 125 tons was used.



7. Package ID 14242



8. General view of the discharge operation



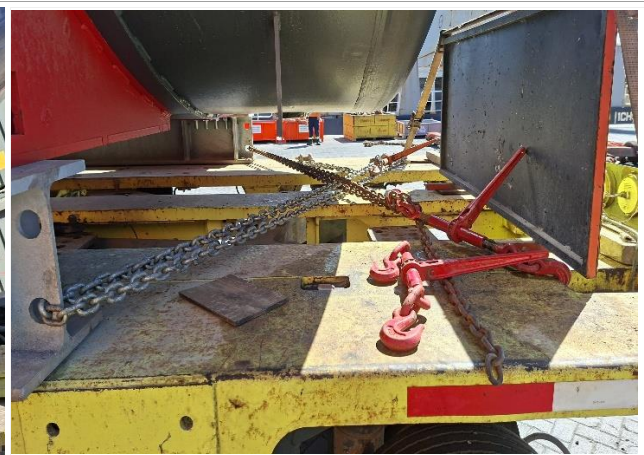
9. Boiler being discharged alongside the vessel.



10. Cargo onto the truck



11. Cargo lashed made fast to truck ringbolt



12. Boiler lashed with chains made fast to truck ringbolt.



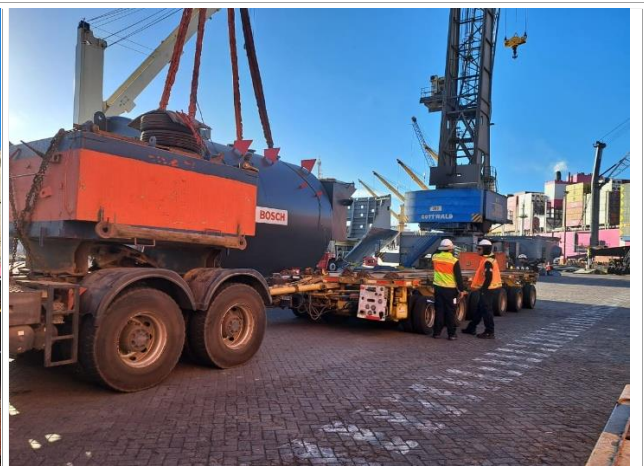
13. Cargo label



14. Boiler being discharged from the vessel



15. Cargo onto the truck



16. Another view of the above



17. Cargo loaded onto the truck and lashed with chains



18. Another view of the above



19. Cargo label



20. Boiler in the process of being discharged from the vessel



21. Boiler during discharge operation



22. Another view of the above



23. Bolier lashed with chains made fast to truck rignbolt



24. Another view of the above



5.1.2.- Loading onto low body truck

Once the cargo had been secured onto trucks, it was transported from Pier No. 4 to the stacking area by the transport company "Ultraport".

6.- SURVEYOR COMMENTS

- Discharge operation was carried out normally and with good performance.
- During the arrival inspection, the cargo was found with damages detailed in Item 5.

7.- ATTENDING PARTIES:

NAME AND COMPANY	ON BEHALF OF
Mr. Boguslaw Janerka/ MASTER MV CONDOR MAGALLANES	Vessel
Mr. Denys Stryzhkov / chief officer MV CONDOR MAGALLANES	Vessel
Mr. Yulier Betancourt / ALS Inspection Chile SpA	DHL
Ms. Daniela Pedraza / ALS Inspection Chile SpA	DHL
Mr. Kurt Krubert / Angamos	Angamos Port

This survey was carried out without prejudice and in the interest of whom it may concern.

**ALS Inspection
Chile Spa**

Prepared by: Y. Betancourt

Revised by: M. Lopez

Valid by: J. Lopez.