

April 14<sup>th</sup>, 2026

MIN-2604-1460

# Inspection Report

SERVICES			
Sampling	-	Port Control	-
Weighing	-	Reception	-
Moisture Determination	-	Stuffing	-
Samples preparation	-	Other (Stock Inspection + HC)	✓

GENERAL INFORMATION	
Client	: Ocean Partners chile spa
Clients reference	: P 31400.03
ALS Reference	: MIN-2604-1460
Place of Inspection	: Enami FHVL , Copiapo
Date of Attendance	: April 14 th, 2026
Material	: Copper Mineral
Surveyor	: ALS Inspection Chile SpA
Inspector	: Christian Letelier

## Scope

- As requested by our client Ocean partners Chile Spa , our company was appointed to perform visual inspection, to check the stock of goods declared as Copper Mineral
- According to the inspection, the amount of material was visually verified on the facilities.

## Visual Inspection

- Material was observed grayish in color, with a solid appearance and it was held stored in one (02) pile, located at ENAMI courtyard.
- Piles are located outdoors the plant.

## Weight (as declared)

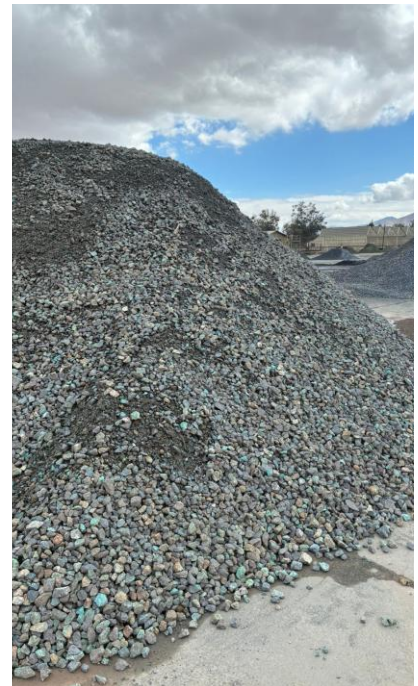
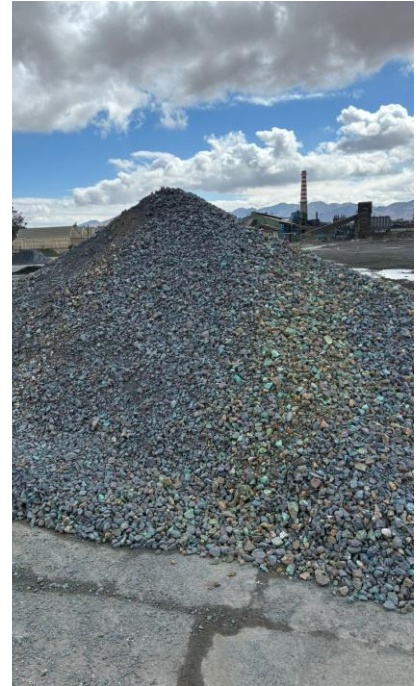
Amount (MT) As declared
300,00



April 14<sup>th</sup>, 2026

MIN-2604-1460

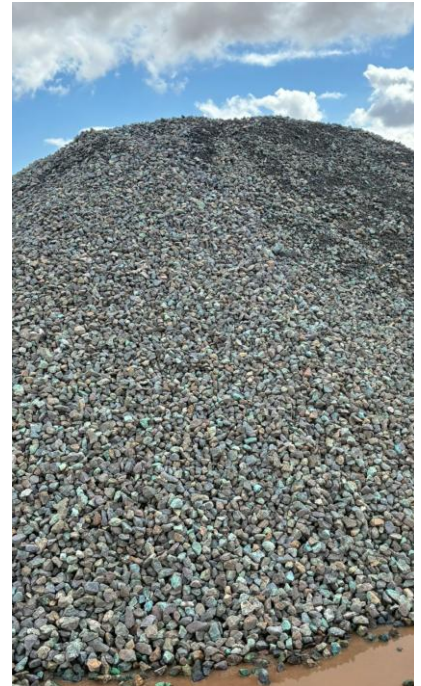
Material stored





April 14<sup>th</sup>, 2026

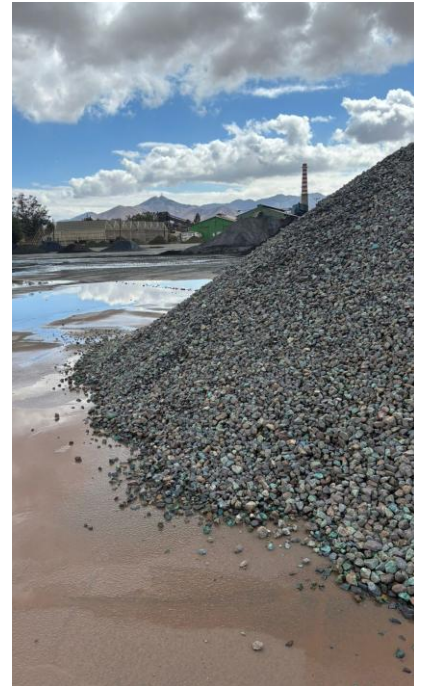
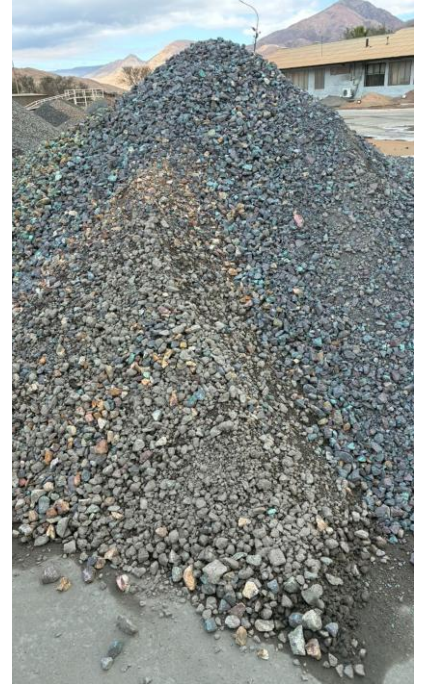
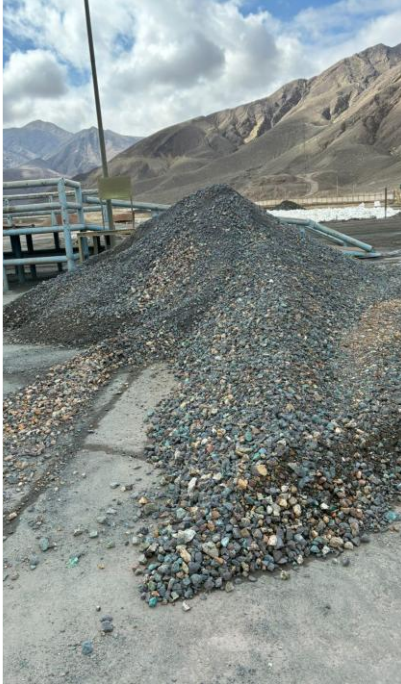
MIN-2604-1460





April 14<sup>th</sup>, 2026

MIN-2604-1460





**ALS Inspection Chile SpA**

Limache 3405, Office 61

Viña del Mar, CHILE

April 14<sup>th</sup>, 2026

MIN-2604-1460

A handwritten signature in blue ink that reads 'CHRISTIAN LETELIER'.

CHRISTIAN LETELIER  
SUPERVISOR

**ALS Inspection Chile**

