



MV "ASL SAKURA"



FULL OFF HIRE & BUNKER SURVEY

This is to certify that the undersigned representative of ALS Inspection Chile SpA, attended on board the motor vessel "**ASL SAKURA**" at the request of **Messrs NORDEN AS.**, with the Master's consent on March 19 & 21 of 2026, while was berthed at pier Nr. 8., Panul Port, San Antonio, in order to carry out an Off Hire, general condition survey and bunker survey, as follows:

COMMENTS BY SURVEYOR

Hull noted with paint, scratched and rusty. Superstructure in good condition; Holds Nr.1, 3, 4 and 5 were found in apparently good structural conditions; paint scratched and rusty. Dust of cargo discharged was observed on cargo holds and main deck. Hold Nr. 2 was found with cargo inside.



INDEX

Content		Page Nr.
I.	Times	3
II.	Vessel's particulars	3
III.	External Hull Condition	3
IV.	General Statement of hull structure	4
V.	Deck	10
VI.	Holds & Hatches	18
VII.	Cargo Gear Conditions	48
VIII.	Bunker Survey	53
IX.	Attending Parties	54
X.	Attachments	55

TERMS AND DEFINITIONS OF CONDITION

Good	G	Unimpaired condition without significant wear or deviation from original strength and operating efficiency. No maintenance or repair required.
Fair	F	Condition in which wear and tear and other deficiencies of minor nature not requiring correction or repair.
Poor	P	Condition in which the adequacy of strength and/or operational efficiency is marginally below acceptable limits, or is in doubt. Remedial action is required.
Unsatisfactory	U	Condition of undoubtedly inadequate strength, or operational efficiency. Immediate extensive repair/renewal, required to reinstate serviceability.
Observation	Obs Nr	Indicate observation number (a special condition or important remark)

SCOPE OF SURVEY

- To examine the weather deck and superstructures, cargo spaces including the cargo cranes, cargo gear and to record all defects.
- To examine the main hull/structures and fittings in each cargo spaces and to record all defects.
- To examine vessel's condition, cleanliness and load readiness and to record all defects.
- To establish by sounding and calculation the quantity of fuel on board at the time of survey and to establish the fuel consumption from the time the vessel became Off-Hire to the time of sounding.

**I. TIMES:**

Date	Time	Description
March 19, 2026	13:50	ALS Surveyor arrival to pier Nr. 8 / Panul port.
	14:00	Surveyor on board MV "ASL SAKURA".
	14:10	Inspection started.
	14:30 - 17:00	Bunker survey at pier Nr. 8 / Panul port - San Antonio
	19:30	Inspection completed.
	19:45	ALS surveyor left the vessel on pier Nr. 8 / Panul port.
March 21, 2026	03:12	MV "ASL SAKURA" DLOSP at San Antonio shore.

II. VESSEL'S PARTICULARS:

Master Name	Mr. Sharma Sachin
Chief Officer Name	Mr. Kshirsagar Siddharth Hemant
Chief Engineer	Mr. Mehta Kushal Ashwin
Flag & Port of Register	Marshall Islands / Majuro
Registered Owners	DUKE SHIP HOLDING SA. / ABO SHOTEN LT.
Charter Name	DAMPSKIBSSELSKABET NORDEN A/S
Year Built	2024
Length Overall	199.90 m.
Breadth	32.26 m.
Depth	18.60 m.
GRT	35,564.00 T
NRT	21,480.00 T

III. EXTERNAL HULL CONDITION

	G	F	P	U	Obs Nr
Structural condition	✓				
Overall appearance	✓				
Coating condition		✓			1

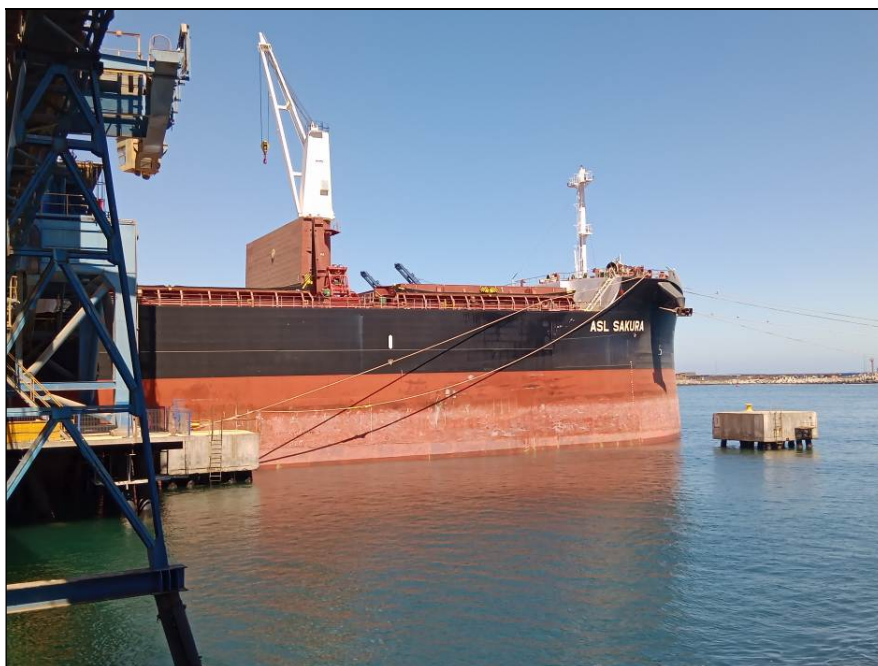
OBSERVATIONS:

No. 1: Hull Plating, Starboard side noted with paint scratched, stained and rusty. (See photos from No. 1 to No.12)



IV. GENERAL STATEMENT OF HULL STRUCTURE

Upon viewing the vessel from various angles, were there any apparent or obvious signs of major longitudinal or transverse deformation or structural failure which might indicate earlier serious damage or poor repairs?	Y	N
		✓



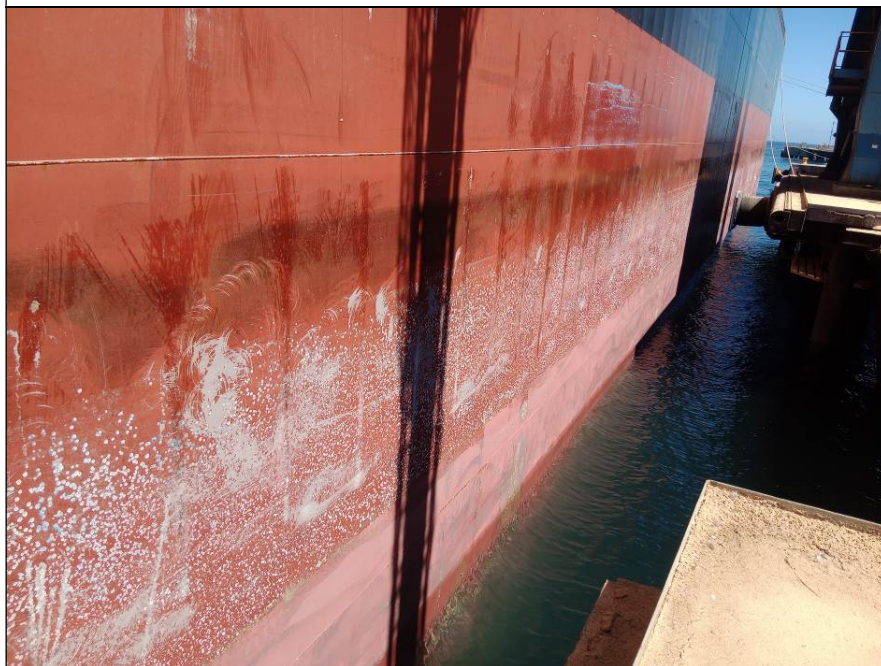
1. General view of Hull Forward Ss.



2. Paint scratched and stained were observed at fwd.



3. Another view.



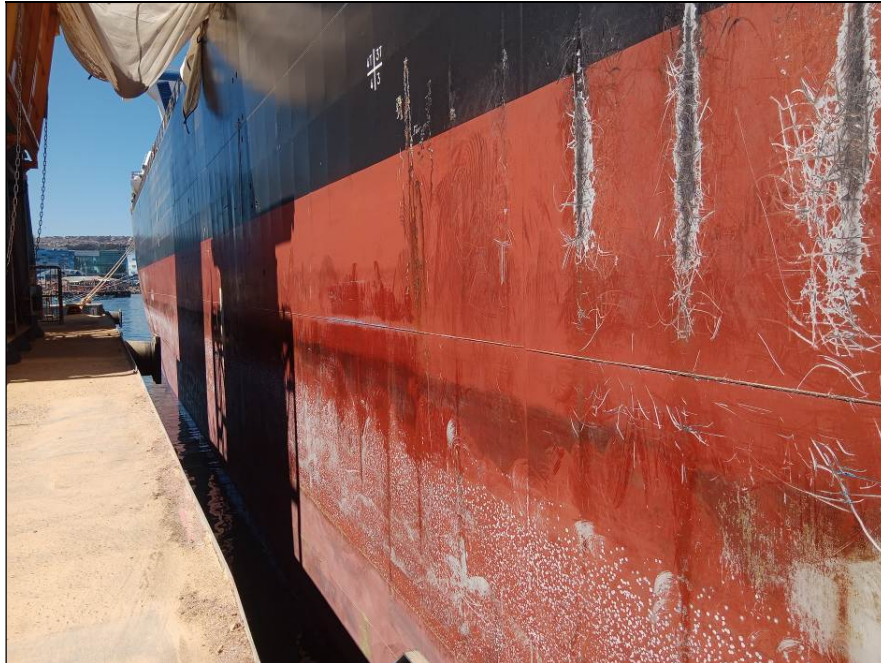
4. Midship to fwd view.



5. Hull, Mid. section; paint scratched and rusty.



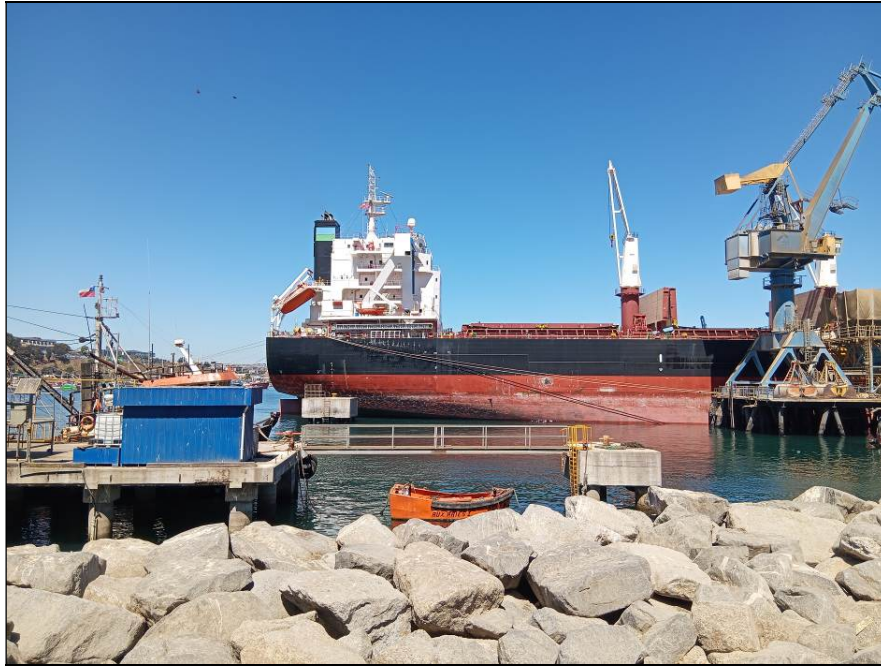
6. Another view.



7. Hull with paint scratched.



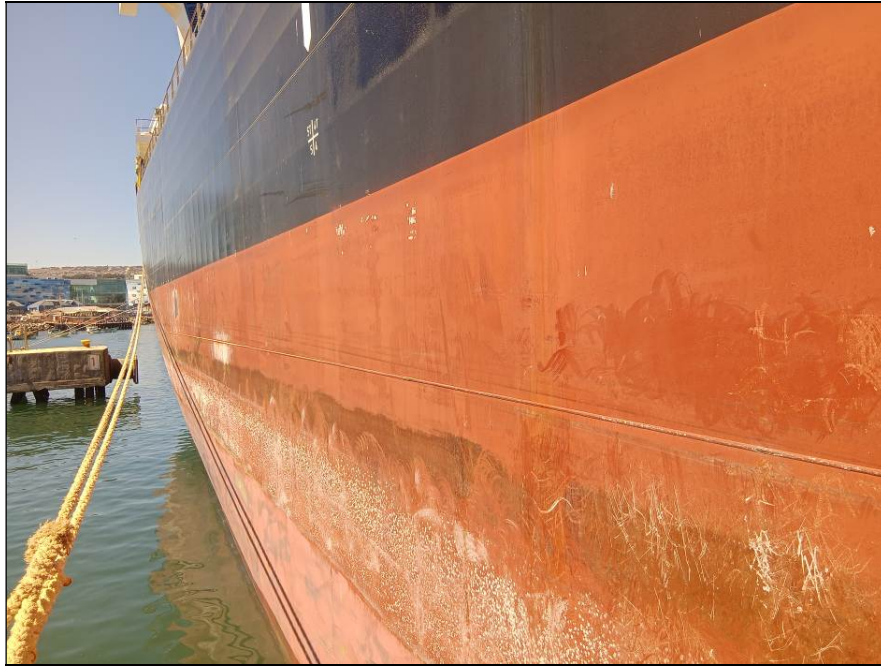
8. Midship draft marks.



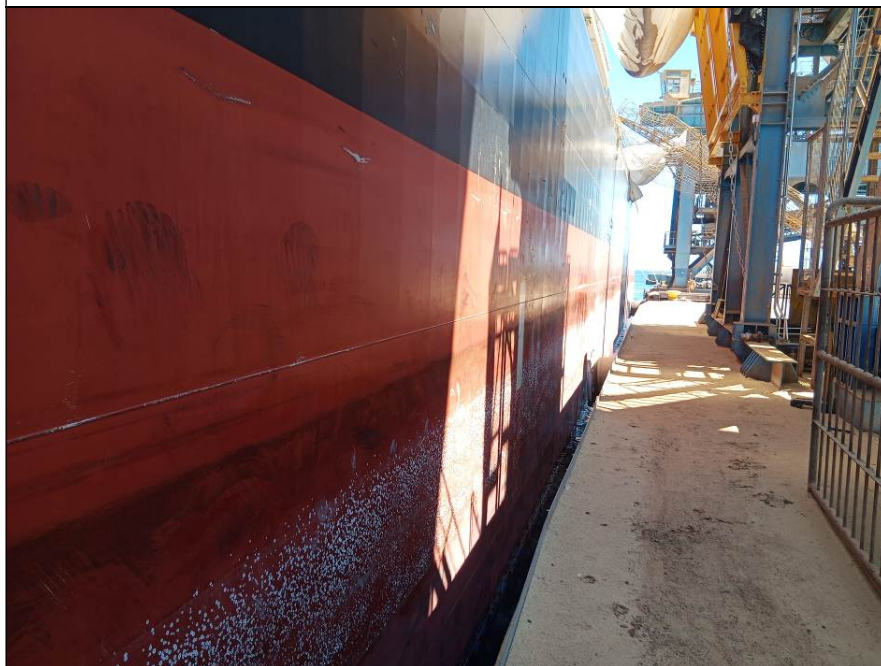
9. Hull aft section, general view.



10. Hull with paint scratched & stained.



11. Another view.



12. Aft view to midship view.



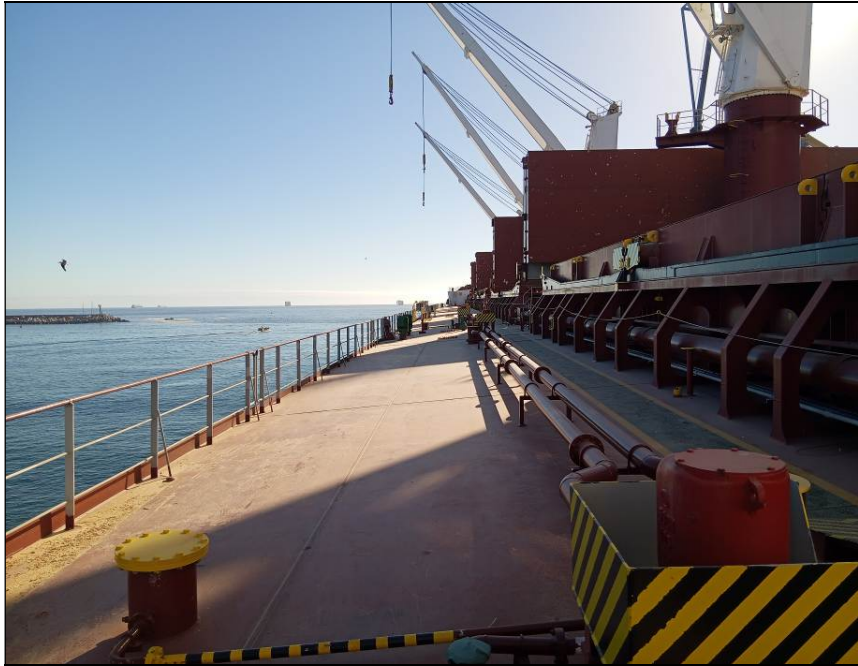
V. DECK

FORECASTLE DECK	G	F	P	U	Obs Nr	POOP DECK	G	F	P	U	Obs Nr
Anchor equipment	✓					Winches	✓				
Railings and bulwark	✓					Systems and bulwark	✓				
Air and sounding pipes	✓					Air and sounding pipes	✓				
Plating	✓					Plating	✓				
Mooring lines		✓			2	Mooring lines		✓			3
Light mast	✓					Access	✓				
Bollards	✓					Bollards	✓				
Fair leaders	✓					Fair leaders	✓				

PORT SIDE DECK	G	F	P	U	Obs Nr	STB SIDE DECK	G	F	P	U	Obs Nr
Hatchcoaming	✓					Hatchcoaming	✓				
Deck plating	✓					Deck plating	✓				
Railings / bulwark	✓					Railings / bulwark	✓				
Piping in way	✓					Piping in way	✓				
Air and sounding pipes	✓					Air and sounding pipes	✓				
Stevedore's access	✓					Stevedore's access	✓				

No. 2: Forward mooring lines stained and worn out (See photos from No. 20)

No. 3: Aft mooring lines stained and worn out (See photos from No. 25)



13. Main deck Ps.



14. General view of Forecastle.



15. Winch Ss Fore deck, in good conditions.



16. Roller guides in good conditions.



17. Bollards in good condition.



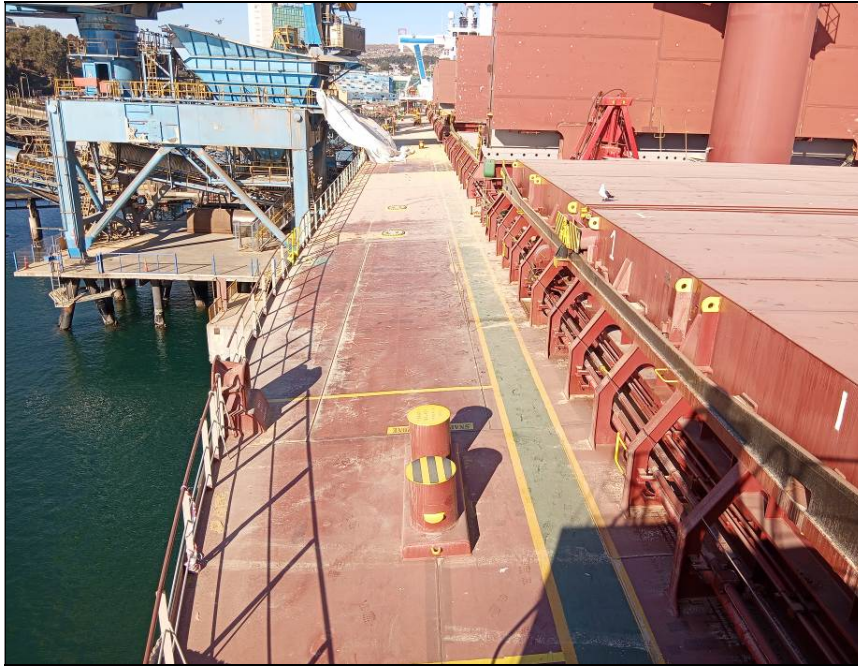
18. Ps capstans, in good conditions.



19. Center winch, in good conditions.



20. Forward mooring lines stained and worn out.



21. Starboard side main deck.



22. General view of Poop deck.



23. Winch Ps poop deck, in good conditions.



24. Winch Ss poop deck, in good conditions.



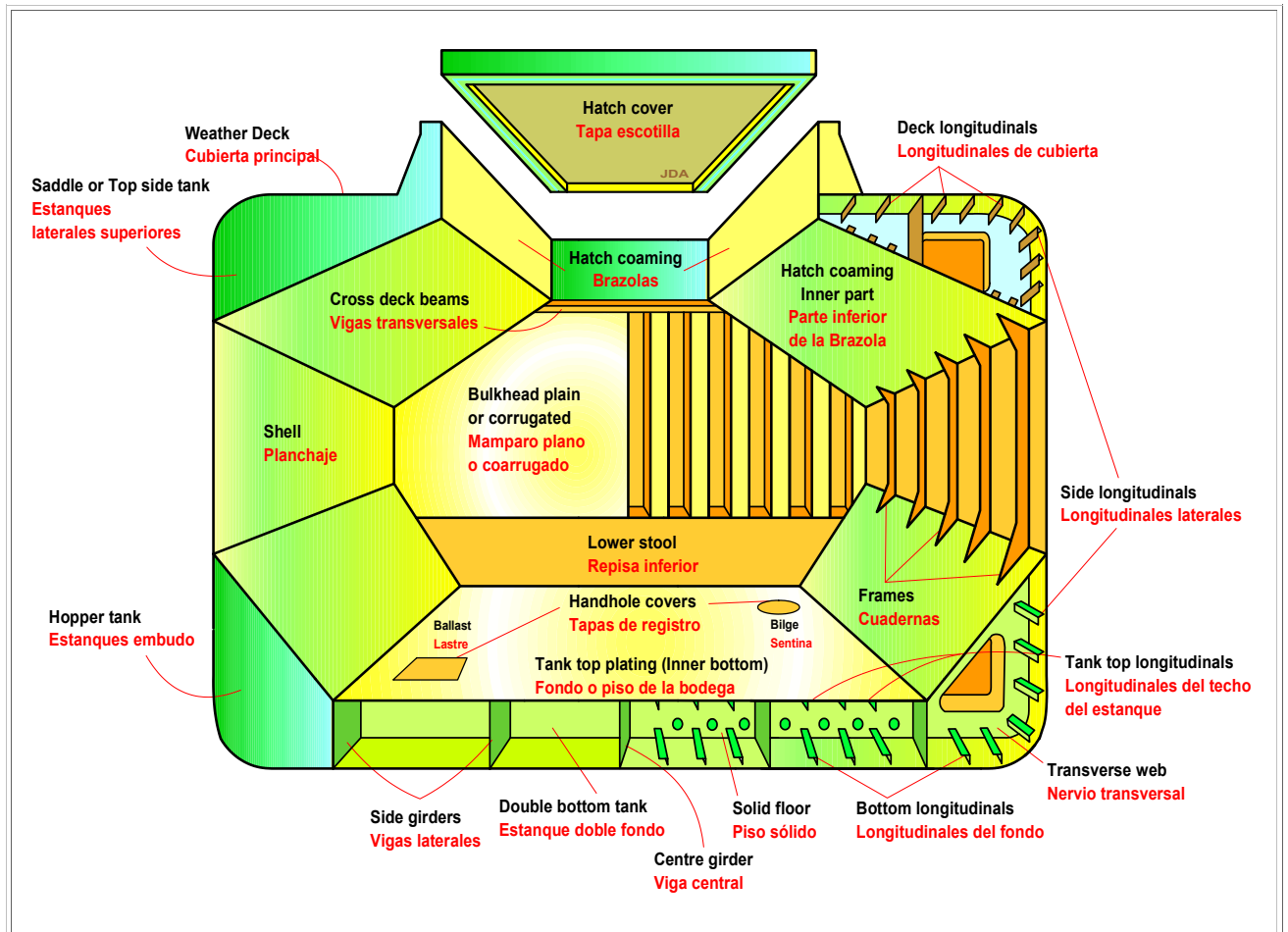
25. Aft mooring lines stained and worn out.



26. Bollards in good conditions.



VI. HOLDS & HATCHES





HATCH & HOLD NR 1	G	F	P	U	Obs Nr
Hatch covers	✓				
Hatch coamings	✓				
Rubber packing	✓				
Draining holes	✓				
Acting cleats	✓				
Compression bars	✓				
Non return valves	✓				
Hydraulic Systems	✓				
Forward bulkhead		✓			4
After bulkhead		✓			5
Side/shell plating (port)		✓			6
Side/shell plating (stb)		✓			7
Frames, brackets and bracket connection	✓				
Tank top plating	✓				
Hopper tank plating	✓				
Under deck plating	✓				
Manholes and covers	✓				
Ventilation, void spaces	✓				
Bilges, suctions	✓				
Ladders	✓				
Air vents	✓				
Sounding pipes	✓				
Cleaning Condition		✓			8

OBSERVATIONS:

No. 4: Forward bulkhead with paint scratched and rust (See photo No. 28)

No. 5: After bulkhead with paint scratched and rust (See photo No. 29)

No. 6: Side/shell plating Ps with paint scratched and rust (See photo No. 30)

No. 7: Side/shell plating Ss with paint scratched and rust (See photo No. 31)

No. 8: Cargo hold with dust of cargo remaining (See photos No. 27 to 33)



27. General view of C/H N°1.



28. Fwd bulkhead with paint scratched and rust.



29. Aft bulkhead with paint scratched and dust.



30. Side/shell plating Ps with paint scratched.



31. Side/shell plating Ss with paint scratched.



32. Tank top plating with dust.



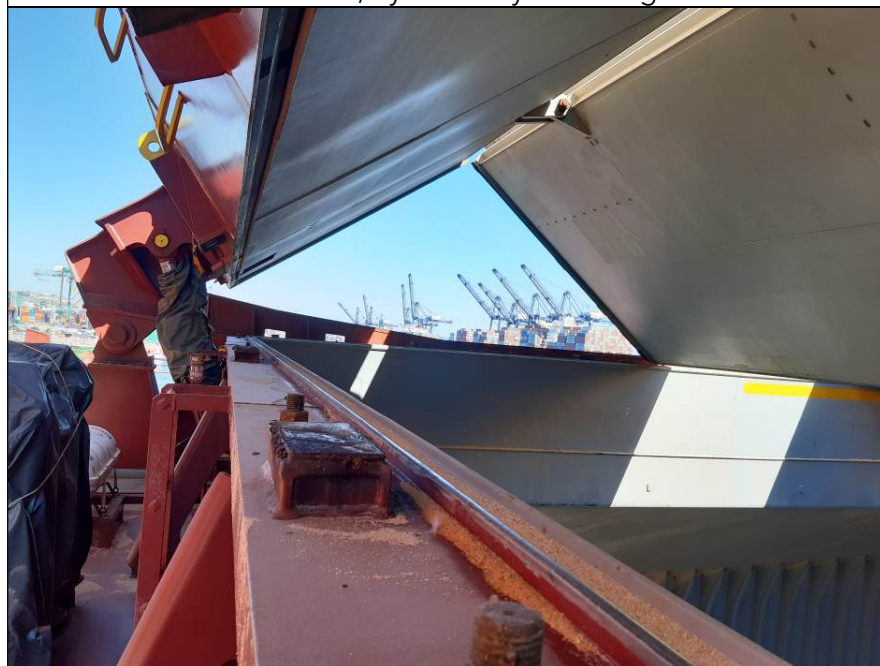
33. Bilge cover.



34. Hatchcover No.1, rubber gasket in good conditions.



35. Hatchcover No. 1, hydraulic systems in good conditions



36. Hatchcover No. 1, compression bars in good conditions.



HATCH & HOLD NR 2	G	F	P	U	Obs Nr
Hatch covers	✓				
Hatch coamings	✓				
Rubber packing	✓				
Draining holes	✓				
Acting cleats	✓				
Compression bars	✓				
Non return valves	✓				
Hydraulic Systems	✓				
Forward bulkhead	✓				
After bulkhead	✓				
Side/shell plating (port)	✓				
Side/Shell plating (stb)	✓				
Frames, brackets and bracket connection	✓				
Tank top plating	✓				
Hopper tank plating	✓				
Under deck plating	✓				
Manholes and covers	✓				
Ventilation, void spaces	✓				
Bilges, suctions	✓				
Ladders	✓				
Air vents	✓				
Sounding pipes	✓				
Cleaning Condition		✓			9

OBSERVATIONS:

No. 9: Hold Nr.2 was inspected under discharging operations. (See photo No. 37-38-39)



37. General view of C/H N° 2,



38. Ss to Ps view.



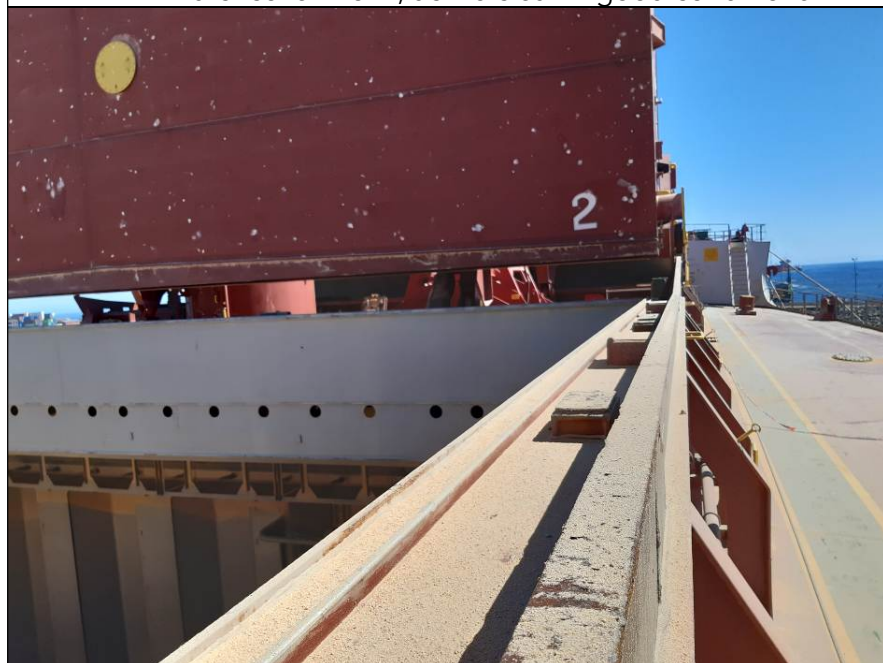
39. Fwd to aft view.



40. Hatchcover No. 2, non-return valves in good conditions.



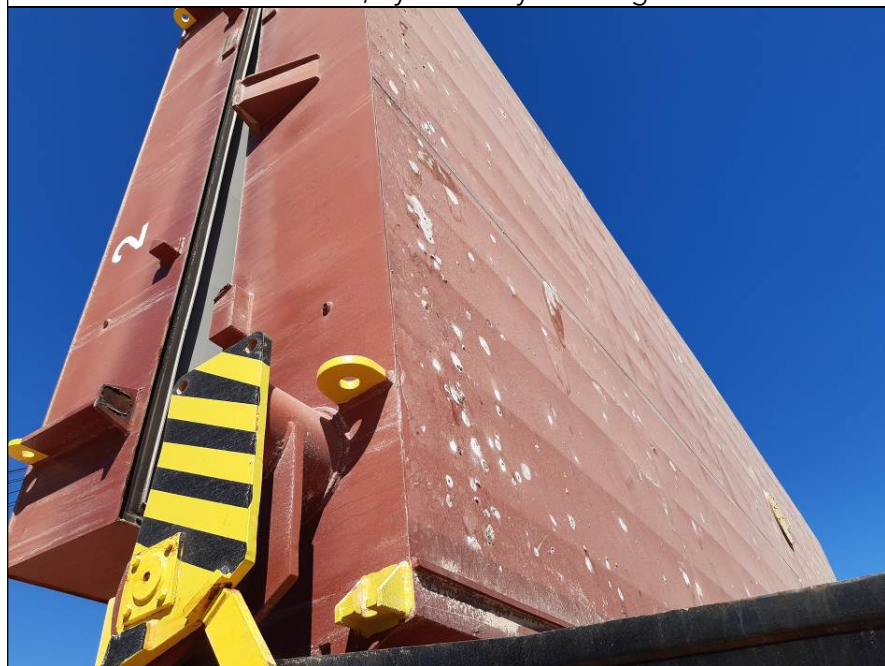
41. Hatchcover No. 2, active cleat in good conditions.



42. Hatchcover No. 2, compression bars in good conditions.



43. Hatchcover No. 2, hydraulic system in good conditions.



44. Hatchcover No. 2, rubber gasket in good conditions.



HATCH & HOLD NR 3	G	F	P	U	Obs Nr
Hatch covers	✓				
Hatch coamings	✓				
Rubber packing	✓				
Draining holes	✓				
Acting cleats	✓				
Compression bars	✓				
Non return valves	✓				
Hydraulic Systems	✓				
Forward bulkhead		✓			10
After bulkhead		✓			11
Side/shell plating (port)		✓			12
Side/Shell plating (stbs)		✓			13
Frames, brackets and bracket connection	✓				
Tank top plating	✓				
Hopper tank plating	✓				
Under deck plating	✓				
Manholes and covers	✓				
Ventilation, void spaces	✓				
Bilges, suctions	✓				
Ladders	✓				
Air vents	✓				
Sounding pipes	✓				
Cleaning Condition		✓			14

OBSERVATIONS:

No. 10: Forward bulkhead with paint scratched (See photo No. 46)

No. 11: After bulkhead with paint scratched (See photo No. 47)

No. 12: Side/shell plating Ps with paint scratched (See photo No. 48)

No. 13: Side/shell plating Ss with paint scratched (See photo No. 49)

No. 14: Cargo hold with dust of cargo remaining (See photos No. 45 to 51)



45. General view of C/H N° 3.



46. Fwd bulkhead, with paint scratched and dust.



47. Aft bulkhead, with paint scratched and dust.



48. Side/shell plating Ps, with paint scratched.



49. Side/shell plating Ss, with paint scratched and rust.



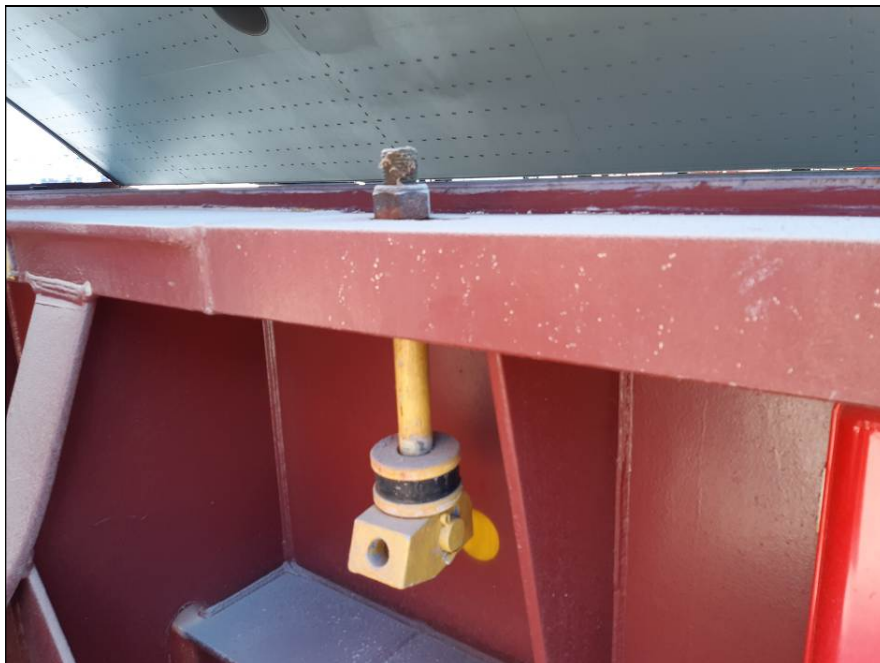
50. Tank top plating with dust of cargo discharged.



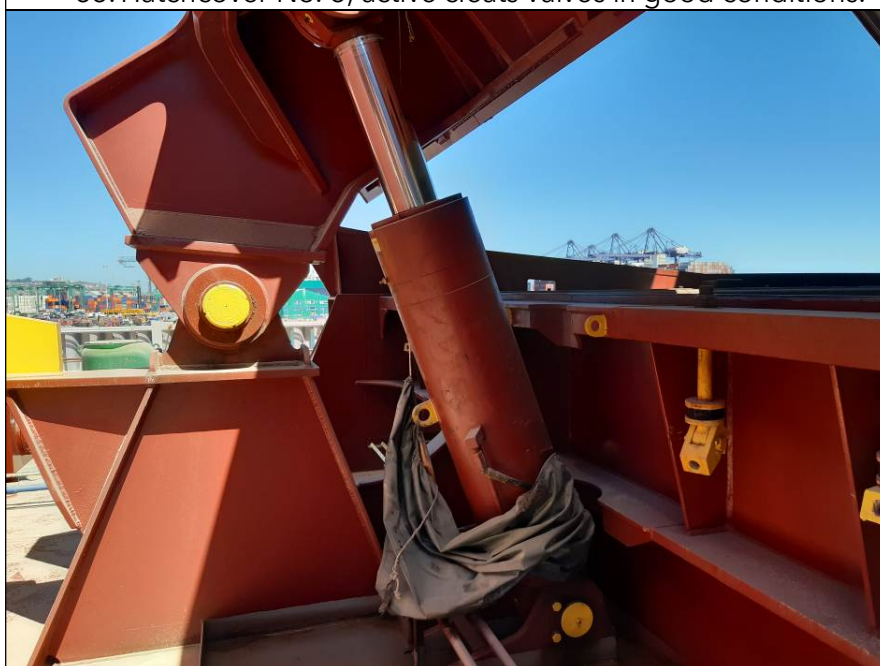
51. Bilge cover.



52. Hatchcover No. 3, non-return valves & acting cleats in good conditions.



53. Hatchcover No. 3, active cleats valves in good conditions.



54. Hatchcover No. 3, hydraulic system in good condition.



HATCH & HOLD NR 4	G	F	P	U	Obs Nr
Hatch covers	✓				
Hatch coamings	✓				
Rubber packing	✓				
Draining holes	✓				
Acting cleats	✓				
Compression bars	✓				
Non return valves	✓				
Hydraulic Systems	✓				
Forward bulkhead		✓			15
After bulkhead		✓			16
Side/shell plating (port)		✓			17
Side/Shell plating (stb)		✓			18
Frames, brackets and bracket connection	✓				
Tank top plating	✓				
Hopper tank plating	✓				
Under deck plating	✓				
Manholes and covers	✓				
Ventilation, void spaces	✓				
Bilges, suctions	✓				
Ladders	✓				
Air vents	✓				
Sounding pipes	✓				
Cleaning Condition		✓			19

OBSERVATIONS:

No. 15: Forward bulkhead with paint scratched (See photo No. 56)

No. 16: After bulkhead with paint scratched (See photo No. 57)

No. 17: Side/shell plating Ps with paint scratched (See photo No. 58)

No. 18: Side/shell plating Ss with paint scratched (See photo No. 59)

No. 19: Cargo hold with dust of cargo remaining (See photos No. 55 to 60)



55. General view of C/H N° 4.



56. Fwd bulkhead with paint scratched.



57. Aft bulkhead with paint scratched.



58. Side/shell plating Ps, with paint scratched and rust.



59. Side/shell plating Ss, with paint scratched and rust.



60. Tank top plating rusty.



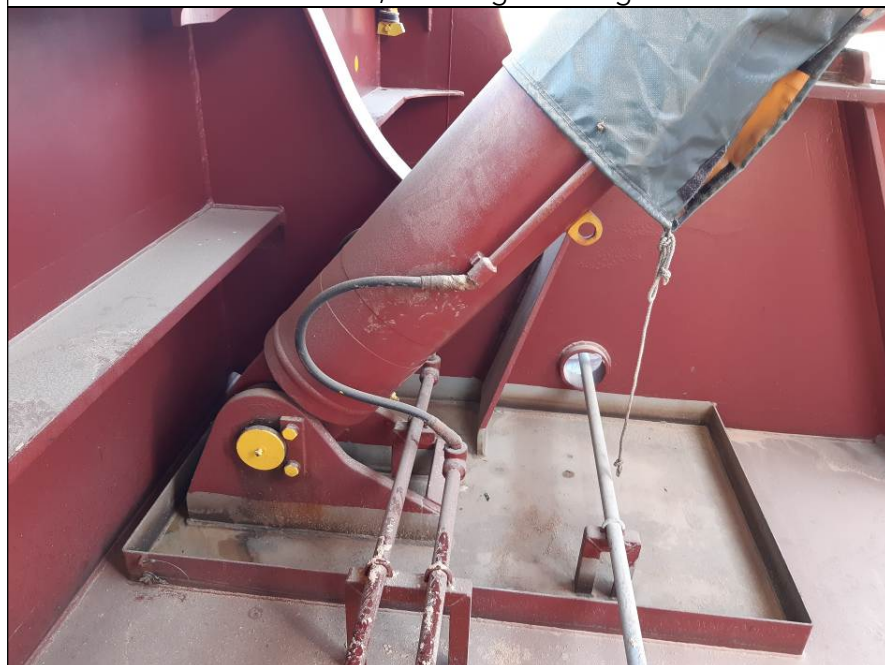
61. Hatchcover No. 4, active cleats valves in good conditions.



62. Hatchcover No. 4, non-return valves in good conditions.



63. Hatchcover No. 4, rubber gasket in good conditions.



64. Hatchcover No. 4, hydraulic system in good condition conditions.



HATCH & HOLD NR 5	G	F	P	U	Obs Nr
Hatch covers	✓				
Hatch coamings	✓				
Rubber packing	✓				
Draining holes	✓				
Acting cleats	✓				
Compression bars	✓				
Non return valves	✓				
Hydraulic Systems	✓				
Forward bulkhead		✓			20
After bulkhead		✓			21
Side/shell plating (port)		✓			22
Side/Shell plating (stb)		✓			23
Frames, brackets and bracket connection	✓				
Tank top plating	✓				
Hopper tank plating	✓				
Under deck plating	✓				
Manholes and covers	✓				
Ventilation, void spaces	✓				
Bilges, suctions	✓				
Ladders	✓				
Air vents	✓				
Sounding pipes	✓				
Cleaning Condition		✓			24

OBSERVATIONS:

No. 20: Forward bulkhead with paint scratched and rust (See photo No. 65)

No. 21: After bulkhead with paint scratched and rust (See photo No. 66)

No. 22: Side/shell plating Ps with paint scratched and rust (See photo No. 67)

No. 23: Side/shell plating Ss with paint scratched and rust (See photo No. 68)

No. 24: Tank top plating rusty (See photos No. 65 to 70)



65. General view of C/H N° 5.



66. Fwd bulkhead with paint scratched.



67. Aft bulkhead with paint scratched.



68. Side/shell plating Ps, with paint scratched and rust.



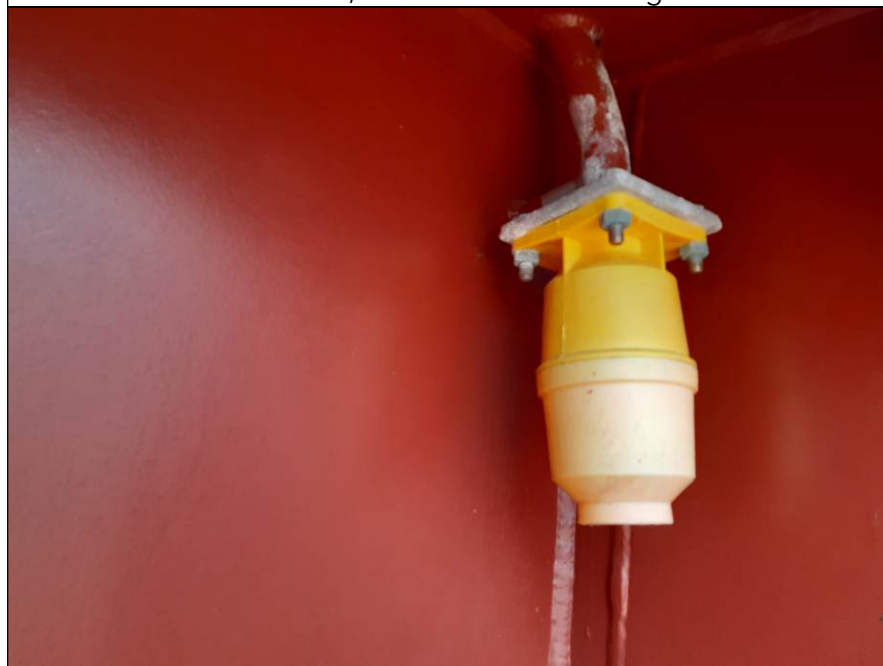
69. Side/shell plating Ss, with paint scratched and rust.



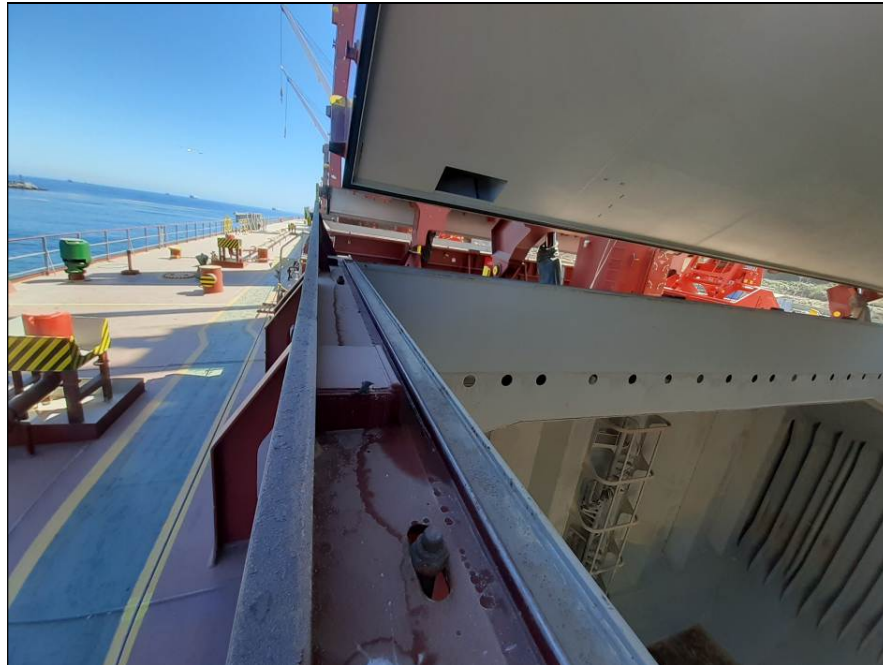
70. Tank top plating rusty, with dust of cargo discharged.



71. Hatchcover No. 5, active cleats valves in good conditions.



72. Hatchcover No. 5, non-return valves in good conditions.



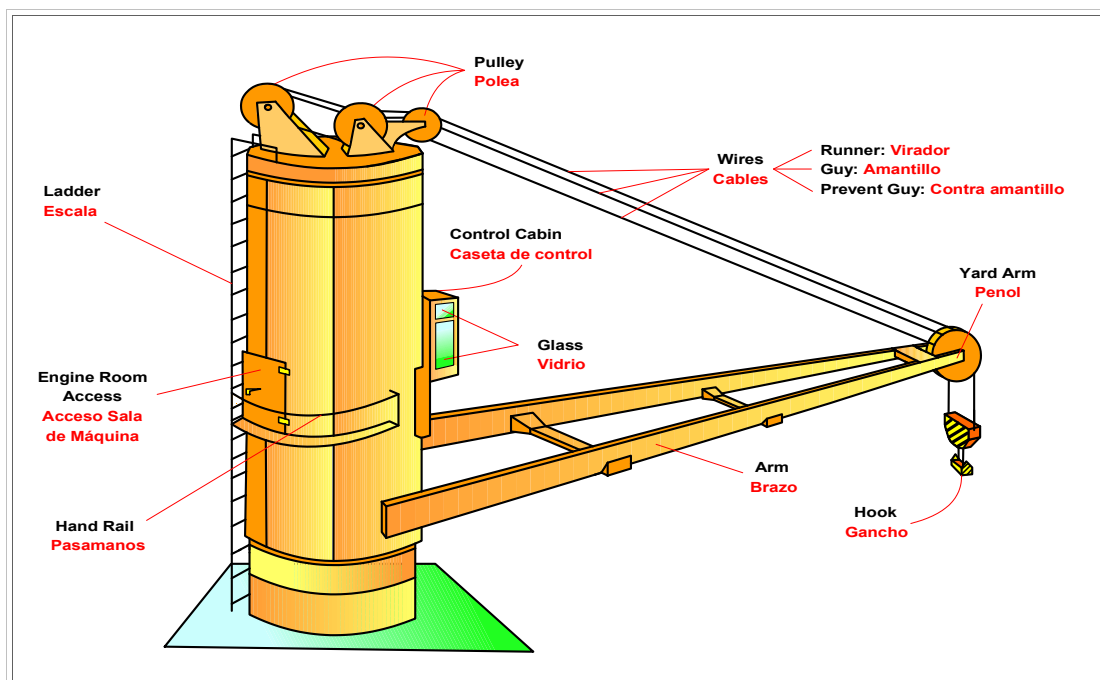
73. Hatchcover No. 5, compression bars in good conditions.



74. Hatchcover No. 5, rubber gasket in good conditions.



VII. CARGO GEAR CONDITION

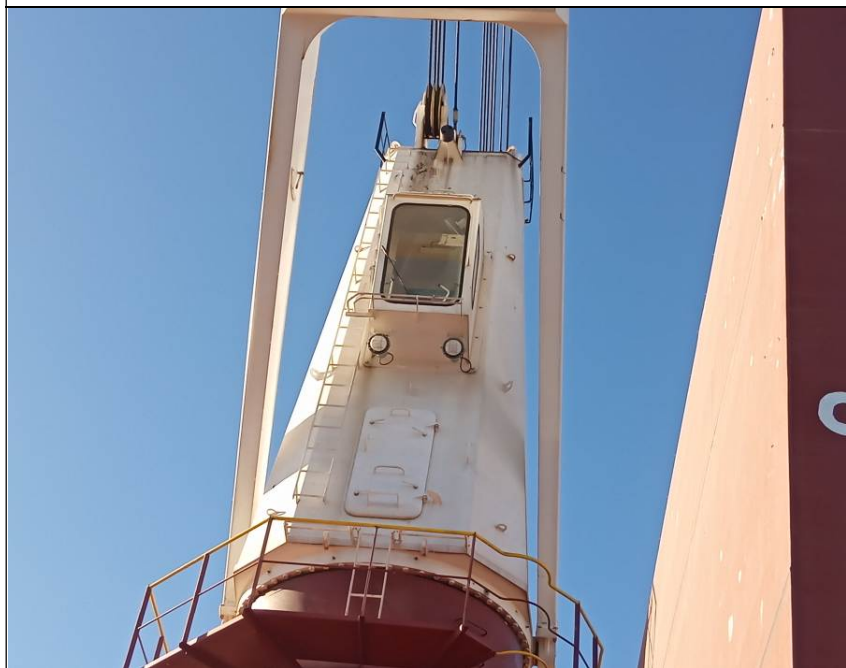


CRANE/DERRICK NR. 1	G	F	P	U	Obs Nr	CRANE/DERRICK NR. 2	G	F	P	U	Obs Nr
Arm/Boom	✓					Arm/Boom	✓				
Wires	✓					Wires	✓				
Winches	✓					Winches	✓				
Controls	✓					Controls	✓				
Railings & Ladders	✓					Railings & Ladders	✓				
Hydraulic pipes	✓					Hydraulic pipes	✓				
Control Cabin Glass	✓					Control Cabin Glass	✓				

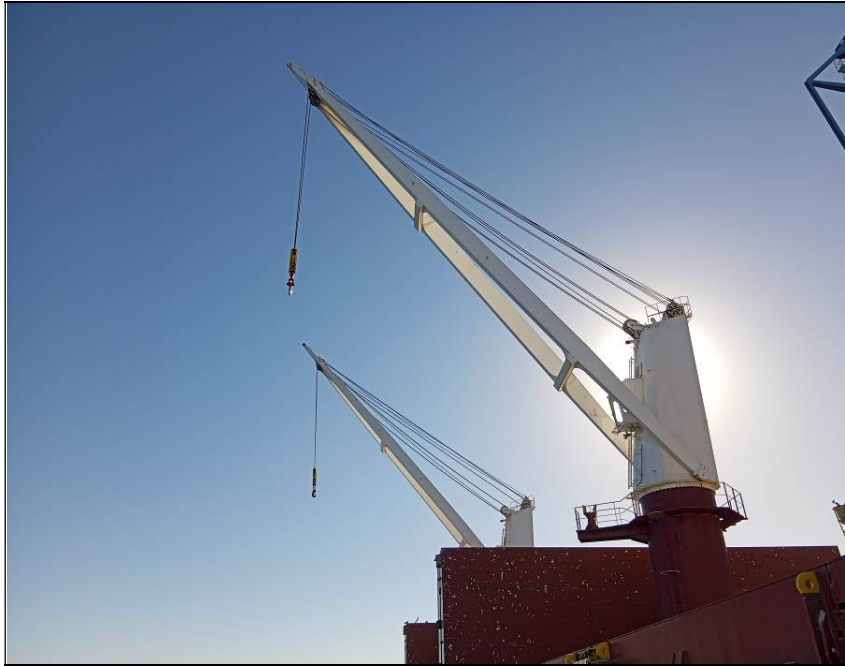
CRANE/DERRICK NR. 3	G	F	P	U	Obs Nr	CRANE/DERRICK NR. 4	G	F	P	U	Obs Nr
Arm/Boom	✓					Arm/Boom	✓				
Wires	✓					Wires	✓				
Winches	✓					Winches	✓				
Controls	✓					Controls	✓				
Railings & Ladders	✓					Railings & Ladders	✓				
Hydraulic pipes	✓					Hydraulic pipes	✓				
Control Cabin Glass	✓					Control Cabin Glass	✓				



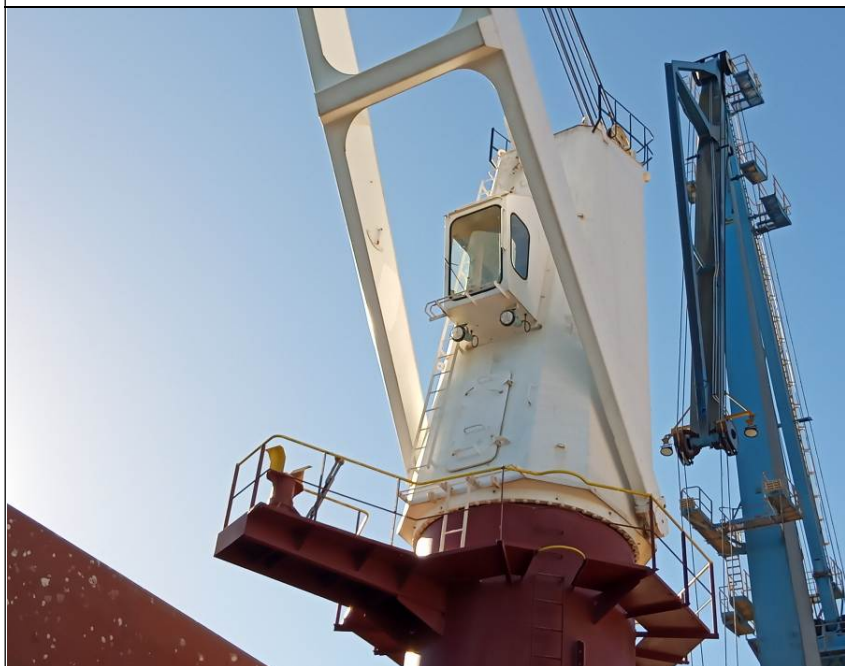
75. Crane No. 1.



76. Another view.



77. Crane No. 2.



78. Another view.



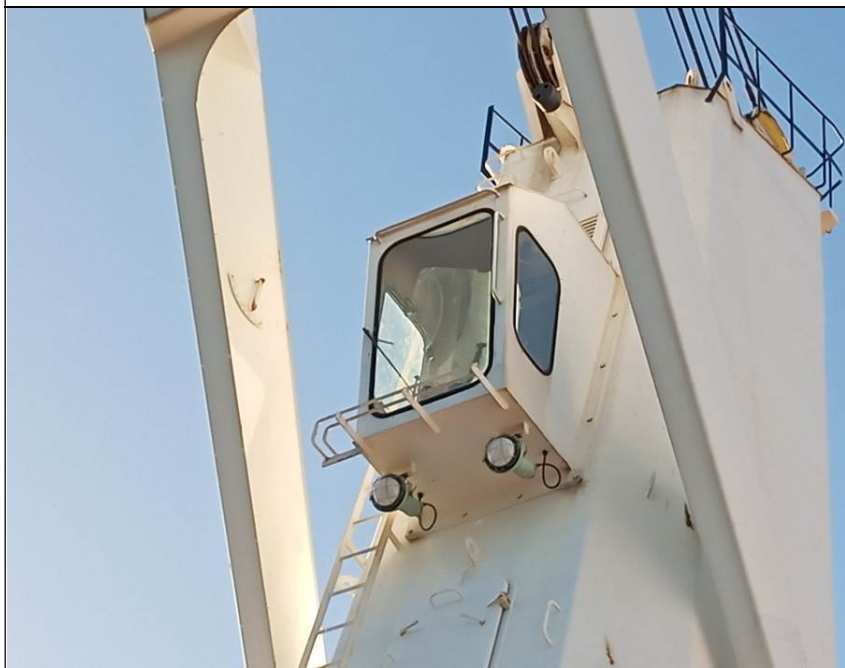
79. Crane No. 3.



80. Another view.



81. Crane No. 4.



82. Another view.



VIII. BUNKER SURVEY

The following quantities were found onboard as calculated by Chief Engineer and the undersigned surveyor, from the ship's calibration curves with due considerations to the trim of the vessel, temperature and specific gravity of oil:

DRAFTS (m)	
Forward	6,10
Aft	6,40
Trim	0,30

TEMPERATURES (°C)	
Sea water	13,5
Engine room	34
To be corrected	15,0

Average consumption per day			
	Fuel oil		Diesel oil
Sailing	17		0
At port	2.5		0
Anchored	2.5		0

Last bunkering information		
Date	MARCH 01, 2026	
Place	ZONA COMUN, ARGENTINA	
Specific gravity	Fuel Oil	Diesel Oil
	0,9419	

FUEL OIL Very Low sulphur										
Tank	Max sounding	Sounding cm	Correction	Sounding corrected	Volume (cbm)	Temp. °C / °F	Sp.gravity 15°C	Correction T.54B	Correction T.56	WEIGHT Metric tons
HFO. TK. 1P	458,00	430,00	0,50	430,50	0,800	19,0	0,9628	0,9972	0,9617	0,767
HFO. TK. 1S	459,00	84,00	1,90	85,90	312,500	22,0	0,9419	0,9949	0,9408	292,507
HFO. TK. 2P	460,00	93,00	2,20	95,20	336,600	19,0	0,9419	0,9971	0,9408	315,757
HFO. TK. 2S	458,00	341,00	2,10	343,10	28,000	22,0	0,9628	0,9950	0,9617	26,794
HFO. TK. 3S	979,00	962,00	0,10	962,10	1,200	42,0	0,9272	0,9799	0,9261	1,089
HFO. SERV 1	G	G	G	G	12,600	65,0	0,9628	0,9643	0,9617	11,685
HFO. SERV 2	G	G	G	G	7,000	105,0	0,9628	0,9353	0,9617	6,297
HFO. SETT 1	G	G	G	G	14,000	102,0	0,9628	0,9375	0,9617	12,623
OVERFLOW	409,00	85,00	0,40	85,40	8,400	22,0	0,9628	0,9950	0,9617	8,038
TOTAL :										675,56

MARINE GAS OIL Low sulphur										
Tank	Max sounding	Sounding cm	Correction	Sounding corrected	Volume (cbm)	Temp. °C / °F	Sp.gravity 15°C	48 T.54B	Correction T.56	WEIGHT Metric tons
MGO. TK 1P	570,00	302,00	0,18	302,18	48,600	34,0	0,8624	0,9844	0,8613	41,209
MGO. TK 2P	570,00	427,00	0,42	427,42	101,500	34,0	0,8624	0,9844	0,8613	86,064
MGO. SERV TK	G	G	G	G	7,600	34,0	0,8624	0,9844	0,8613	6,444
TOTAL :										133,72



Quantities of Bunkers found at Bunker Survey time on March 19, 2026 at 16:00 LT hours:

Fuel Oil (Very Low Sulphur)	675.56 MT
Marine Gas Oil (Low Sulphur)	133.72 MT

Consumption of Bunkers between Re-Delivery time and Bunker survey:

Fuel Oil (Very Low Sulphur)	3.20 MT
Marine Gas Oil (Low Sulphur)	0.00 MT

Quantity of Bunker at Re-Delivery time DLOSP San Antonio shore, Chile on March 21, 2026 at 03:12 hours LT (March 21, 2026 at 06:12 hours UTC).

Fuel Oil (Very Low Sulphur)	672.36 MT
Marine Gas Oil (Low Sulphur)	133.72 MT

IX. ATTENDING PARTIES

Name	Position	Company	On behalf of
Mr. Sharma Sachin	Captain	Mv ASL Sakura	Owners
Mr. Kshirsagar Siddharth Hemant	Chief Officer	Mv ASL Sakura	Owners
Mr. Mehta Kushal Ashwin	Chief Engineer	Mv ASL Sakura	Owners
Mr. Claudio Alvear	Marine surveyor	ALS Inspection Chile SpA.	NORDEN AS



ALS Inspection Chile SpA

Limache 3405, Office 61

Viña del Mar, CHILE

T +56 32 2545 500

Report: SAI-2603-1081

Date: March 23, 2026

X. ATTACHMENTS

- Re -Delivery Bunker Certificate.

This survey was carried out without prejudice and in the interest of whom it may concern.

Surveyor
ALS Inspection Chile SpA.

Prepared by : C. Alvear
Reviewed by : J. Lopez
Validated by : J. Lopez