



- **ALS Inspection Chile SpA**
Limache 3405, Office 61
Viña del Mar, CHILE
 - T +56 32 2545 500
- Report: ANF-2601-0079.
Date: January 9, 2026.

PRELIMINARY REPORT

TO	TOTALILLO TERMINAL
FROM	ALS INSPECTION CHILE SPA
PRELIMINARY ISSUE DATE	JANUARY 09, 2026
CLIENT REF	N/A
ALS REF	ANF-2601-0079.
SCOPE OF SURVEY	INSPECTION OF 16 MOORING LINES.
VESSEL NAME	SEACON AFRICA.
PLACE OF SURVEY	CALDERA, BAY.
DATE OF SURVEY	JANUARY 09, 2026
TIME OF SURVEY	11:15 HRS. TO 13:15 HRS.
Please find our preliminary report; this should be taken as an initial approach of the appointed inspection. Additional information, findings, photographs, and conclusions will be part of our final report.	

SURVEYOR'S COMMENTS

From a total of 16 mooring lines inspected:

- 16 COMPLY with the length and visual condition for use.



- **ALS Inspection Chile SpA**
Limache 3405, Office 61
Viña del Mar, CHILE
 - T +56 32 2545 500
- Report: ANF-2601-0079.
Date: January 9, 2026.

1. SCOPE OF SURVEY

To perform a visual inspection to the condition of 16 mooring lines, measure its length and diameter, on board of MV **SEACON AFRICA**. at the CALDERA, BAY.

2. TIMES:

ITEM	DATE	HOURS
ALS Surveyor arrives to inspection place.	09/01/2026.	11:00
Start Inspection of the 16 mooring lines on board the vessel.		11:15
Inspection completed.		13:15
ALS surveyor left the vessel.		14:00

3. INSPECTION

Below is a detail and observations of the mooring lines inspected:

ITEM	POSITION	MEASUREMENTS		SEAL ALS	OBSERVATIONS
		LENGTH (m)	DIAMETER (mm)		
1	STERN	224,0	65,0	2985627	ACCEPTED.
2	STERN	221,7	70,0	2985628	ACCEPTED.
3	STERN	220,4	77,0	2985629	ACCEPTED.
4	STERN	221,8	77,0	2985630	ACCEPTED.
5	STERN	221,2	75,0	2985631	ACCEPTED.
6	STERN	221,2	75,0	2985632	ACCEPTED.
7	BETWEEN (08/09)	221,2	70,0	2985633	ACCEPTED.
8	BETWEEN (08/09)	221,0	70,0	2985634	ACCEPTED.
9	BOW	222,4	72,0	2985635	ACCEPTED.
10	BOW	221,1	70,0	2985636	ACCEPTED.
11	BETWEEN (01/02)	220,1	80,0	2985637	ACCEPTED.
12	BETWEEN (01/02)	220,2	80,0	2985638	ACCEPTED.



- **ALS Inspection Chile SpA**
Limache 3405, Office 61
Viña del Mar, CHILE
 - T +56 32 2545 500
- Report: ANF-2601-0079.
Date: January 9, 2026.

13	BOW	221,6	64,0	2985639	ACCEPTED.
14	BOW	223,4	62,0	2985640	ACCEPTED.
15	IN CASE OF EMERGENCY	221,7	73,0	2985641	ACCEPTED.
16	IN CASE OF EMERGENCY	221,5	73,0	2985642	ACCEPTED.

4.-COMMENTS

No records or history of previous inspections of the mooring lines from ALS company were shown, not did the units possess visible or recognizable identification such as plates, sleeves, seals, or permanent marks from ALS company, Caldera, Chile.

The mooring ropes corresponding to standard ropes. According to information received from Vessel Chief officer the vessel does not use mooring tails.

5.- CONCLUSIONS

From a total of 16 mooring lines inspected, 16 of them comply with the conditions for use.

This survey was carried out without prejudice and in the interest of whom it may concern.

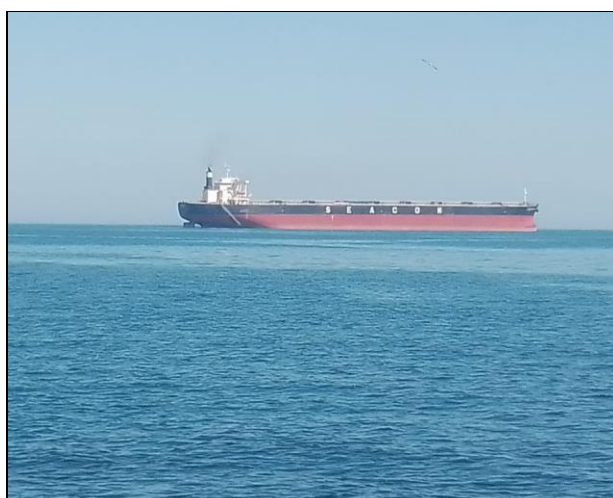
ALS INSPECTION CHILE Spa

Prepared by: D. Lucero.
Reviewed by: M. Lopez.
Validated by: J. Lopez

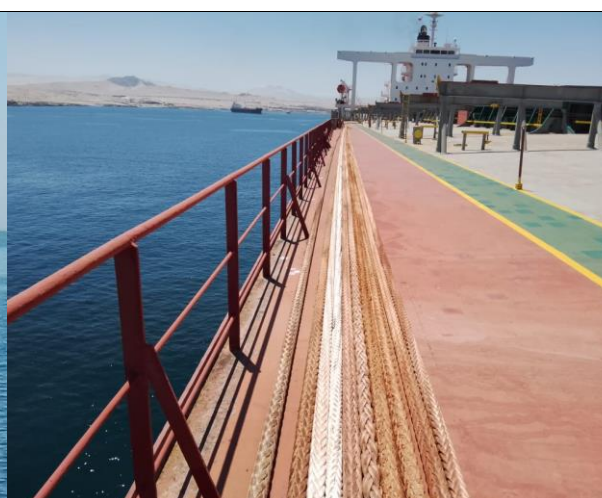


- **ALS Inspection Chile SpA**
Limache 3405, Office 61
Viña del Mar, CHILE
 - T +56 32 2545 500
- Report: ANF-2601-0079.
Date: January 9, 2026.

PHOTOGRAPHIC SET



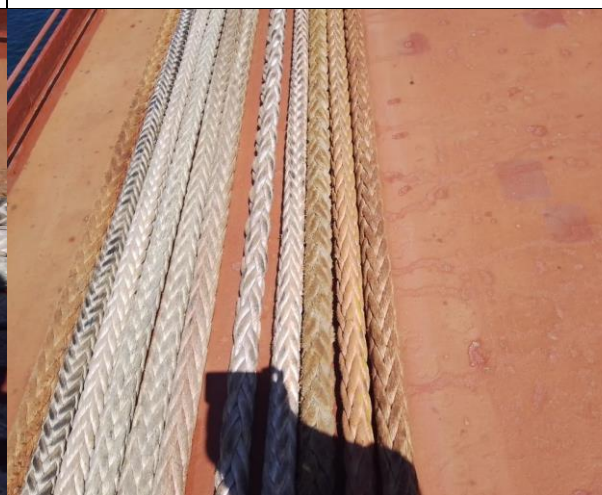
1. General view of vessel.



2. View of mooring lines conditions on deck.



3. Another view of mooring lines arranged for its inspection.



4. Another view of mooring lines arranged for its inspection.



- **ALS Inspection Chile SpA**

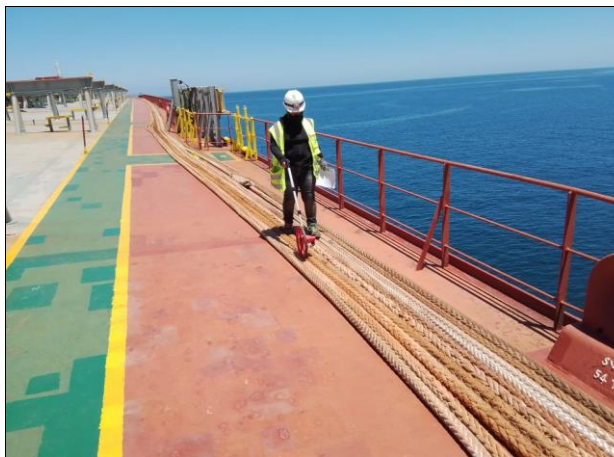
Limache 3405, Office 61

Viña del Mar, CHILE

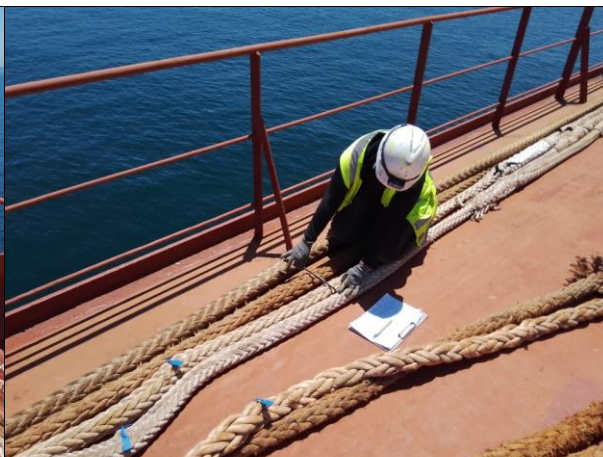
- T +56 32 2545 500

- Report: ANF-2601-0079.

Date: January 9, 2026.



5. View of length measurement of the mooring lines.



6. ALS inspector put of seal to the mooring lines.



7. View of mooring lines with ALS SEAL. Nr-2985635.



8. Another view of mooring lines with ALS SEAL. Nr- 2985634.



- **ALS Inspection Chile SpA**
Limache 3405, Office 61
Viña del Mar, CHILE
 - T +56 32 2545 500
- Report: ANF-2601-0079.
Date: January 9, 2026.



9. General view of diameter.



10- Internal condition.



11. View of length measurement of mooring lines.



12. Another view of the mooring lines measurement.



- **ALS Inspection Chile SpA**
Limache 3405, Office 61
Viña del Mar, CHILE
 - T +56 32 2545 500
- Report: ANF-2601-0079.
Date: January 9, 2026.