



MV "ULTRA FOREST"



FULL ON HIRE & BUNKER SURVEY

This is to certify that the undersigned representative of ALS Inspection Chile did, at the request of **Messrs. DAMPSKIBSSELSKABET NORDEN A/S**, attend on board motor vessel "**ULTRA FOREST**" with Master consent on May 31, 2026, while she was at berthed at **pier Nr. 8, Panul Port**, San Antonio, Chile, in order to carry out an On Hire, general condition survey and bunker survey, as follows:

COMMENTS BY SURVEYOR

Vessel with certificates updated; hull was observed by Starboard side, and it was observed with paint scratched, stained and with rust; superstructure in good condition; cargo holds were observed clean and dry, cargo hold Nr. 4 was observed with cargo inside, shell plating with paint scratched; hatchcovers were in apparent good structural conditions; cargo cranes were observed in apparent good conditions



INDEX

Content		Page Nr.
I.	Times	3
II.	Vessel's particulars	3
III.	Capacities	3
IV.	Certificates Status	4
V.	External Hull Condition	5
VI.	General Statement of hull structure	5
VII.	Deck	12
VIII.	Holds & Hatches	20
IX.	Cargo Gear Conditions	51
X.	Bunker Survey	56
XI.	Attending Parties	57
XII.	Attachments	58

TERMS AND DEFINITIONS OF CONDITION

Good	G	Unimpaired condition without significant wear or deviation from original strength and operating efficiency. No maintenance or repair required.
Fair	F	Condition in which wear and tear and other deficiencies of minor nature not requiring correction or repair.
Poor	P	Condition in which the adequacy of strength and/or operational efficiency is marginally below acceptable limits or is in doubt. Remedial action is required.
Unsatisfactory	U	Condition of undoubtedly inadequate strength, or operational efficiency. Immediate extensive repair/renewal, required to reinstate serviceability.
Observation	Obs Nr.	Indicate observation number (a special condition or important remark).

SCOPE OF SURVEY

- To verify capacities and general arrangement plans, loading manuals and all certificates and to report upon them.
- To examine the weather deck and superstructures, cargo spaces including the cargo cranes, cargo gear and to record all defects.
- To examine the main hull/structures and fittings in each cargo spaces and to record all defects.
- To examine vessel's condition, cleanliness, and load readiness and to record all defects.



- To establish by sounding and calculation the quantity of fuel on board at the time of survey and to establish the fuel consumption from the time the vessel became On-Hire to the time of sounding.

I. TIMES

Date	Time	Description
May 31, 2026	09:30	ALS Surveyor on board MV "ULTRA FOREST"
	10:00	Bunker Survey commenced
	12:30	Bunker Survey completed
	09:50 - 12:30	Inspection Holds and Cranes
	12:45	ALS surveyor left the vessel

II. VESSEL'S PARTICULARS

Master Name	Mr. Cruz Elmer Centeno
Chief Officer Name	Mr. Hurtado Norberto Iv Balan
Chief Engineer	Mr. Lozada Joel Nicdao
Flag & Port of Register	Panama / Panama
Registered Owners	Ratu Shipping Co. SA.
Year Built	December 2020
Length Overall	179.90 m
Breath	30.00 m
Summer. Draft	10.819
GRT	25,163.00 mt
NRT	13,493.00 mt
Classification Society	B.V.
Cargo gear	4 set of cranes SWL 30.5 Tons x 26.0 meters

III. CAPACITIES

Cargo Capacity	Bale 49,126.30 cbm / Grain 50,317.00 cbm
Summer. DWT	40,312.00 mt
IFO / MGO	IFO 1000.10 cbm / MGO 632.00 cbm
Lub Oil	--
Hydraulic Oil	--
Fresh Water	341.00 cbm
Ballast Water	16,428.30 cbm



IV. CERTIFICATES STATUS

Certificate / Document	Issue date	Expiry date	Endorsement
	Issue place		
Certificate of Registry	05 JAN 2026	02 FEB 2031	PANAMA MARITIME AUTHORITY
	PANAMA		
Certificate of Class	19 NOV 2025	14 DEC 2030	BV
	KOBE, JAPAN		
International Tonnage	01 FEB 2021	-	BV
	SHANGHAI, CHINA		
Suez Canal Tonnage	02 FEB 2021	-	BV
	SHANGHAI, CHINA		
Panama Tonnage	02 FEB 2021	-	BV
	SHANGHAI, CHINA		
International load line	25 NOV 2023	14 DEC 2030	BV
	QINGDAO		
Cargo ship safety construction	19 NOV 2021	14 DEC 2030	BV
	KOBE, JAPAN		
Cargo Ship Safety Equipment	19 NOV 2021	14 DEC 2030	BV
	KOBE, JAPAN		
Cargo Ship Safety Radio	19 NOV 2021	14 DEC 2030	BV
	KOBE, JAPAN		
Annual Cargo Gear Examination	19 NOV 2021	-	BV
	KOBE, JAPAN		
International Oil Pollution Prevention	19 NOV 2021	14 DEC 2030	BV
	KOBE, JAPAN		
International Air Pollution Prevention	19 NOV 2021	14 DEC 2030	BV
	KOBE, JAPAN		
International Ship Security	05 MAY 2026	-	BV
	ARGENTINA		
Last Port State Control	02 APR 2026	-	BENIN MARITIME ADMINSTRATION
	COTONOU, BENIN		
Last Dry Dock	19 NOV 2025	-	XINYA, SHIPYARD
	ZHOUSHAN, CHINA		



V. EXTERNAL HULL CONDITION

	G	F	P	U	Obs Nr	
Structural condition	✓					
Overall appearance		✓			1	
Coating condition	✓					

OBSERVATIONS: Nr. 1:

Hull Ps/Ss with paint scratched, stained and rusty (See photo Nr. 1, 2, 3, 4, 5, 7, 8, 9, 10, 11 and 12)

VI. GENERAL STATEMENT OF HULL STRUCTURE

Upon viewing vessel from various angles, were there any apparent or obvious signs of major longitudinal or transverse deformation or structural failure which might indicate earlier serious damage or poor repairs?	Y	N
		✓



1. General view of Hull Forward Ss.



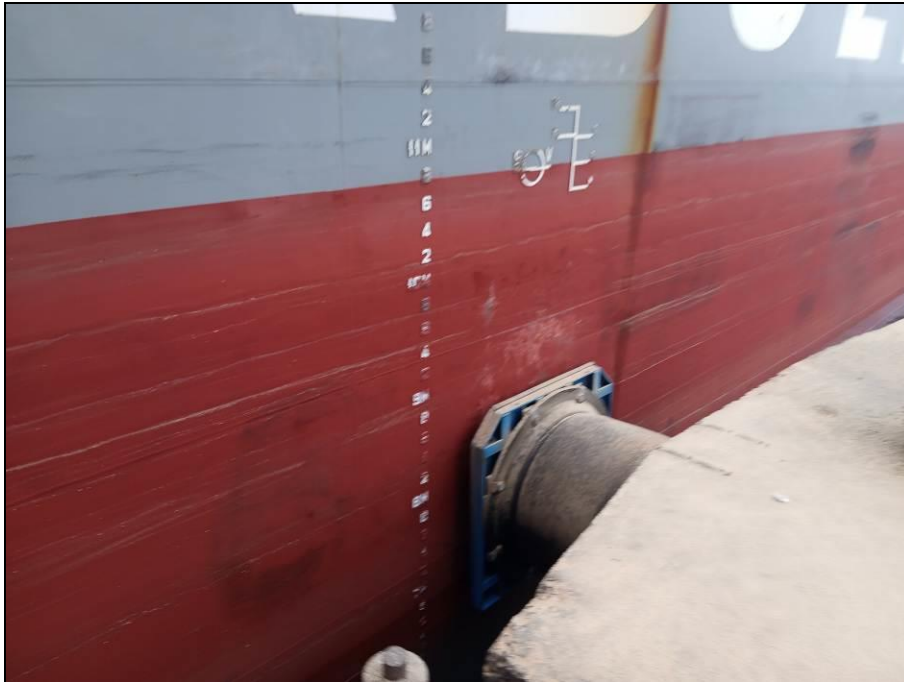
2. Paint scratched and stained were observed at fwd.



3. Another view.



4. Midship to fwd view.



5. Hull, Mid. section; paint scratched and rusty.



6. Another view.



7. Hull with paint scratched.



8. Hull with paint scratched and rusty.



9. Hull aft section, general view.



10. Hull with paint scratched & stained.



11. Another view.



12. Aft to fwd view.



VII. DECK

FORECASTLE DECK	G	F	P	U	Obs Nr	POOP DECK	G	F	P	U	Obs Nr
Anchor equipment	✓					Winches	✓				
Railings and bulwark	✓					Systems and bulwark	✓				
Air and sounding pipes	✓					Air and sounding pipes	✓				
Plating	✓					Plating	✓				
Mooring lines		✓			2	Mooring lines		✓			3
Light mast	✓					Access	✓				
Bollards	✓					Bollards	✓				
Fair leaders	✓					Fair leaders	✓				

PORT SIDE DECK	G	F	P	U	Obs Nr	STB SIDE DECK	G	F	P	U	Obs Nr
Hatchcoaming	✓					Hatchcoaming	✓				
Deck plating	✓					Deck plating	✓				
Railings / bulwark	✓					Railings / bulwark	✓				
Piping in way	✓					Piping in way	✓				
Air and sounding pipes	✓					Air and sounding pipes	✓				
Stevedore's access	✓					Stevedore's access	✓				

Observations:

Nr. 2: Mooring lines Fwd wear and tear (See photo Nr. 20)

Nr. 3: Mooring lines Aft wear and tear (See photo Nr. 25)



13. Main deck Ps.



14. General view of Forecastle.



15. Winch Ss Fore deck, in good conditions.



16. Roller guides in good conditions.



17. Bollards in good condition.



18. Ps capstans, in good conditions.



19. Ss capstans, in good conditions.



20. Forward mooring lines stained and worn out.



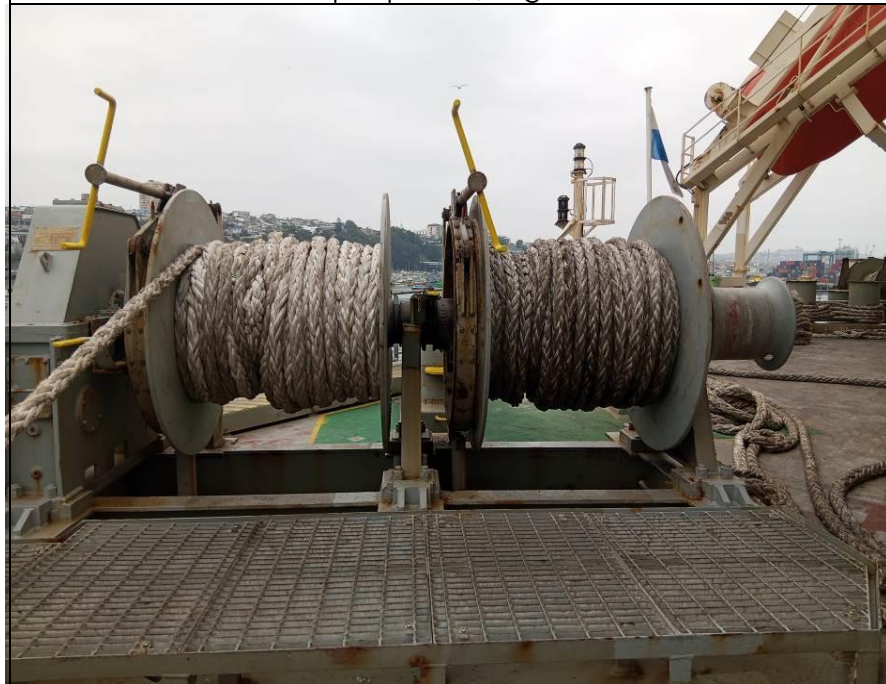
21. Starboard side main deck.



22. General view of Poop deck.



23. Winch Ps poop deck, in good conditions.



24. Winch Ss poop deck, in good conditions.



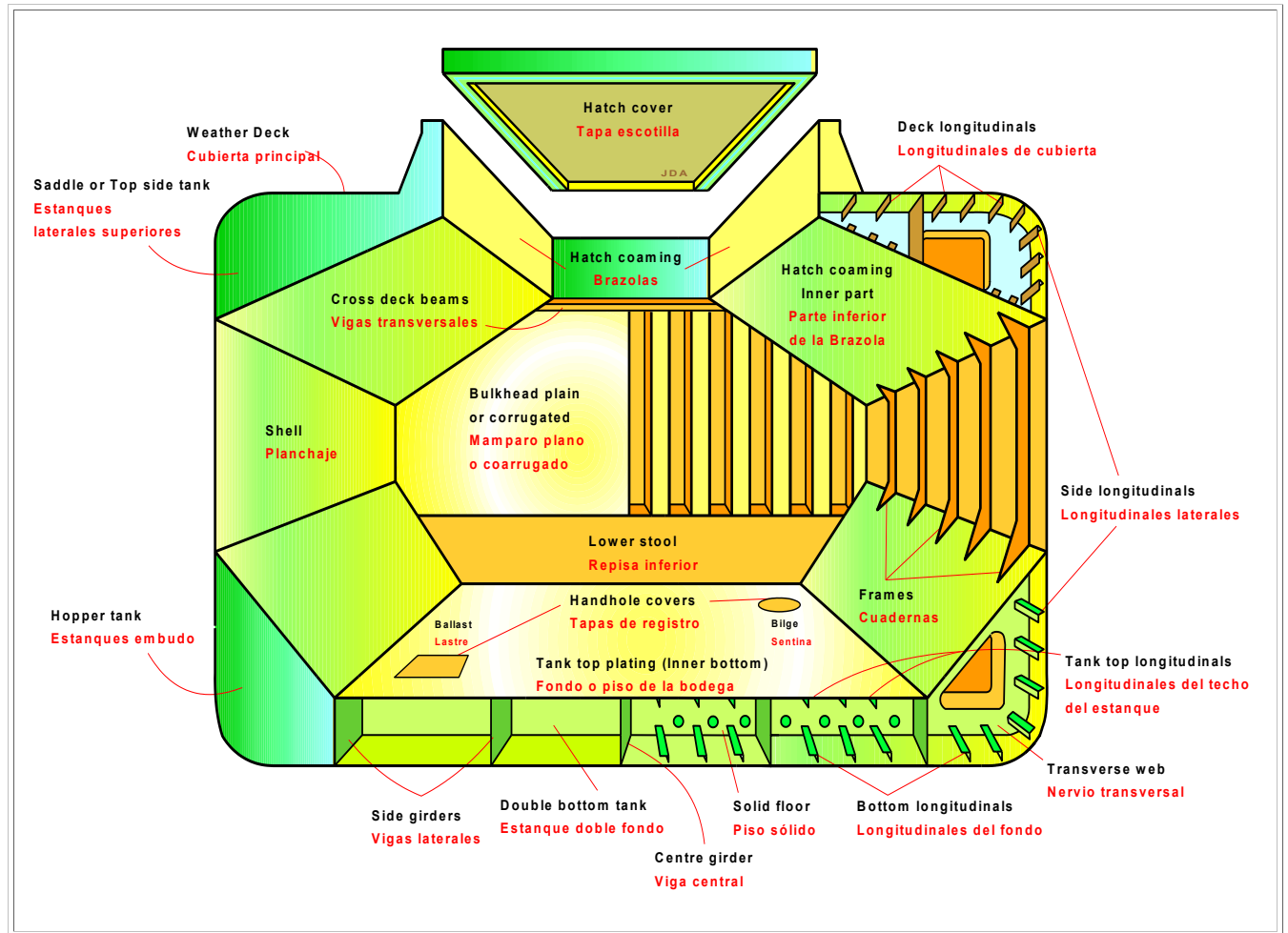
25. Aft mooring lines stained and worn out.



26. Bollards in good conditions.



VIII. HOLDS & HATCHES





HATCH & HOLD NR. 1	G	F	P	U	Obs Nr	
Hatch covers	✓					
Hatch coamings	✓					
Rubber packing	✓					
Draining holes	✓					
Acting cleats	✓					
Compression bars	✓					
Non return valves	✓					
Hydraulic Systems	✓					
Forward bulkhead		✓			4	
After bulkhead		✓			5	
Side/shell plating (port)		✓			6	
Side/shell plating (stb)		✓			7	
Frames, brackets and bracket connection	✓					
Tank top plating	✓					
Hopper tank plating	✓					
Under deck plating	✓					
Manholes and covers	✓					
Ventilation, void spaces	✓					
Bilges, suctions	✓					
Ladders	✓					
Air vents	✓					
Sounding pipes	✓					
Cleaning Condition		✓			8	

OBSERVATIONS:

No. 4: Forward bulkhead with paint scratched and rust (See photo No. 28)

No. 5: After bulkhead with paint scratched and rust (See photo No. 29)

No. 6: Side/shell plating Ps with paint scratched and rust (See photo No. 30)

No. 7: Side/shell plating Ss with paint scratched and rust (See photo No. 31)

No. 8: Tan top plating with dust (See photos No. 32)



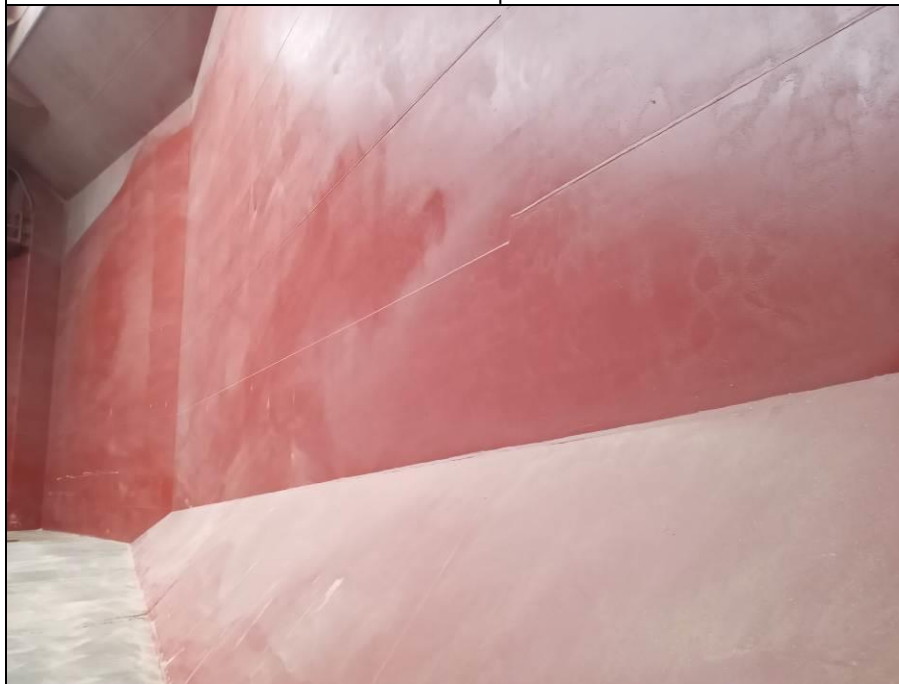
27. General view of C/H N°1.



28. Fwd bulkhead with paint scratched.



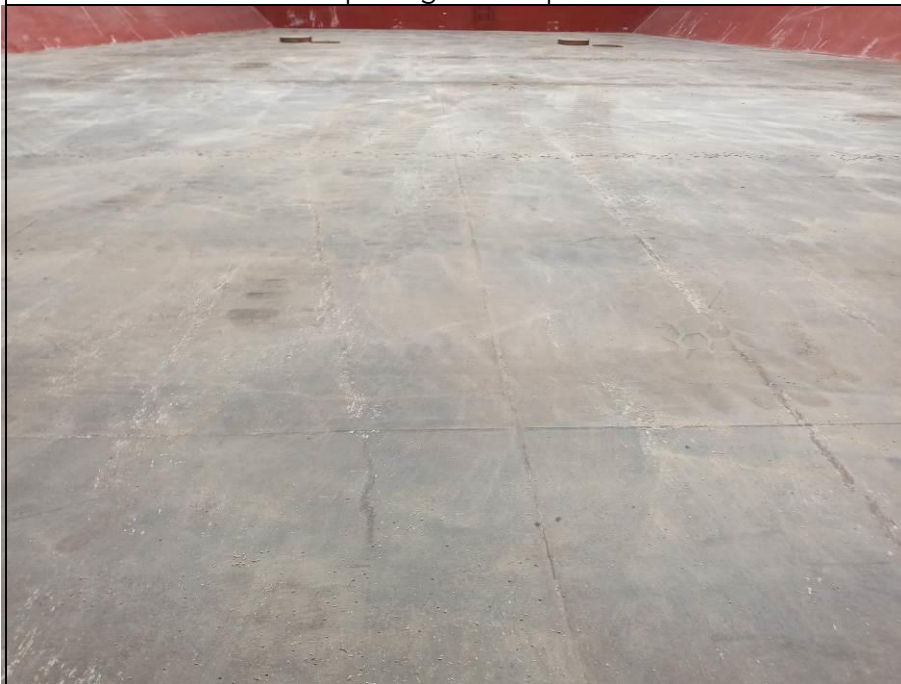
29. Aft bulkhead with paint scratched.



30. Side/shell plating Ps with paint scratched.



31. Side/shell plating Ss with paint scratched.



32. Tank top plating with rust.



33. Bilge with dust of cargo discharged.



34. Hatchcover No.1, rubber gasket in good conditions.



35. Hatchcover No. 1, hydraulic systems in good conditions



36. Hatchcover No. 1, compression bars in good conditions.



HATCH & HOLD NR. 2	G	F	P	U	Obs Nr	
Hatch covers	✓					
Hatch coamings	✓					
Rubber packing	✓					
Draining holes	✓					
Acting cleats	✓					
Compression bars	✓					
Non return valves	✓					
Hydraulic Systems		✓				9
Forward bulkhead		✓				10
After bulkhead		✓				11
Side/shell plating (port)		✓				12
Side/Shell plating (stb)	✓					
Frames, brackets and bracket connection	✓					
Tank top plating	✓					
Hopper tank plating	✓					
Under deck plating	✓					
Manholes and covers	✓					
Ventilation, void spaces	✓					
Bilges, suctions	✓					
Ladders	✓					
Air vents	✓					
Sounding pipes	✓					
Cleaning Condition		✓				13

OBSERVATIONS:

No. 9: Forward bulkhead with paint scratched and dust (See photo No. 38)

No. 10: After bulkhead with paint scratched and dust (See photo No. 39)

No. 11: Side/shell plating Ps with paint scratched and dust (See photo No. 40)

No. 12: Side/shell plating Ss with paint scratched and dust (See photo No. 41)

No. 13: Tan top plating with dust (See photos No. 42 & 43)



37. General view of C/H N° 2.



38. Fwd bulkhead, with paint scratched and dust.



39. Aft bulkhead, with paint scratched and dust.



40. Side/shell plating Ps, with paint scratched and dust.



41. Side/shell plating Ss, with paint scratched and rust.



42. Tank top plating with dust.



43. Another view.



44. Hatchcover No. 2, non-return valves in good conditions.



45. Hatchcover No. 2, active cleats in good conditions.



46. Hatchcover No. 2, rubber gasket in good condition.



HATCH & HOLD NR. 3	G	F	P	U	Obs Nr
Hatch covers	✓				
Hatch coamings	✓				
Rubber packing	✓				
Draining holes	✓				
Acting cleats	✓				
Compression bars	✓				
Non return valves	✓				
Hydraulic Systems	✓				
Forward bulkhead		✓		14	
After bulkhead		✓		15	
Side/shell plating (port)		✓		16	
Side/Shell plating (stb)		✓		17	
Frames, brackets and bracket connection	✓				
Tank top plating	✓				
Hopper tank plating	✓				
Under deck plating	✓				
Manholes and covers	✓				
Ventilation, void spaces	✓				
Bilges, suctions	✓				
Ladders	✓				
Air vents	✓				
Sounding pipes	✓				
Cleaning Condition		✓		18	

OBSERVATIONS:

No. 14: Forward bulkhead with paint scratched and dust (See photo No. 48)

No. 15: After bulkhead with paint scratched and dust (See photo No. 49)

No. 16: Side/shell plating Ps with paint scratched and dust (See photo No. 50)

No. 17: Side/shell plating Ss with paint scratched and dust (See photo No. 51)

No. 18: Tan top plating with dust (See photos No. 52)



47. General view of C/H N° 3.



48. Fwd bulkhead, with paint scratched and dust.



49. Aft bulkhead, with paint scratched and dust.



50. Side/shell plating Ps, with paint scratched and dust.



51. Side/shell plating Ss, with paint scratched and rust.



52. Tank top plating with dust.



53. Hatchcover No. 3, non-return valves in good conditions.



54. Hatchcover No. 3, hydraulic system in good conditions.



55. Hatchcover No. 3, active cleat in good conditions.



56. Hatchcover No. 3, compression bars in good conditions.



HATCH & HOLD NR. 4	G	F	P	U	Obs Nr
Hatch covers	✓				
Hatch coamings	✓				
Rubber packing	✓				
Draining holes	✓				
Acting cleats	✓				
Compression bars	✓				
Non return valves	✓				
Hydraulic Systems	✓				
Forward bulkhead	✓				
After bulkhead	✓				
Side/shell plating (port)	✓				
Side/Shell plating (stb)	✓				
Frames, brackets and bracket connection	✓				
Tank top plating	✓				
Hopper tank plating	✓				
Under deck plating	✓				
Manholes and covers	✓				
Ventilation, void spaces	✓				
Bilges, suctions	✓				
Ladders	✓				
Air vents	✓				
Sounding pipes	✓				
Cleaning Condition	✓				19

OBSERVATIONS:

No. 19: Cargo inspected during discharge operations (See photos No. 42 & 43)



57. General view of C/H N° 4.



58. Fwd bulkhead view.



59. Aft bulkhead with paint scratched and rust.



60. Side/shell plating Ps, with paint scratched and rust.



61. Side/shell plating Ss, with paint scratched and rust.



62. Hatch cover view.



63. Hatchcover No. 4, active cleats valves in good conditions.



64. Hatchcover No. 4, non-return valves in good conditions.



65. Hatchcover No. 4, rubber gasket in good conditions.



66. Hatchcover No. 4, hydraulic system in good condition conditions.



HATCH & HOLD NR. 5	G	F	P	U	Obs Nr	
Hatch covers	✓					
Hatch coamings	✓					
Rubber packing	✓					
Draining holes	✓					
Acting cleats	✓					
Compression bars	✓					
Non return valves	✓					
Hydraulic Systems	✓					
Forward bulkhead		✓				20
After bulkhead		✓				21
Side/shell plating (port)		✓				22
Side/Shell plating (stb)		✓				23
Frames, brackets and bracket connection	✓					
Tank top plating	✓					
Hopper tank plating	✓					
Under deck plating	✓					
Manholes and covers	✓					
Ventilation, void spaces	✓					
Bilges, suctions	✓					
Ladders	✓					
Air vents	✓					
Sounding pipes	✓					
Cleaning Condition		✓				24

OBSERVATIONS:

No. 20: Forward bulkhead with paint scratched and rust (See photo No. 68)

No. 21: After bulkhead with paint scratched and rust (See photo No. 69)

No. 22: Side/shell plating Ps with paint scratched and rust (See photo No. 70)

No. 23: Side/shell plating Ss with paint scratched and rust (See photo No. 71)

No. 24: Tan top plating with dust (See photos No. 72 & 73)



67. General view of C/H N° 5.



68. Fwd bulkhead with paint scratched.



69. Aft bulkhead with paint scratched.



70. Side/shell plating Ps, with paint scratched and rust.



71. Side/shell plating Ss, with paint scratched and rust.



72. Tank top plating with dust.



73. Hatchcover No. 5, active cleats in good conditions.



74. Hatchcover No. 5, hydraulic system in good conditions.



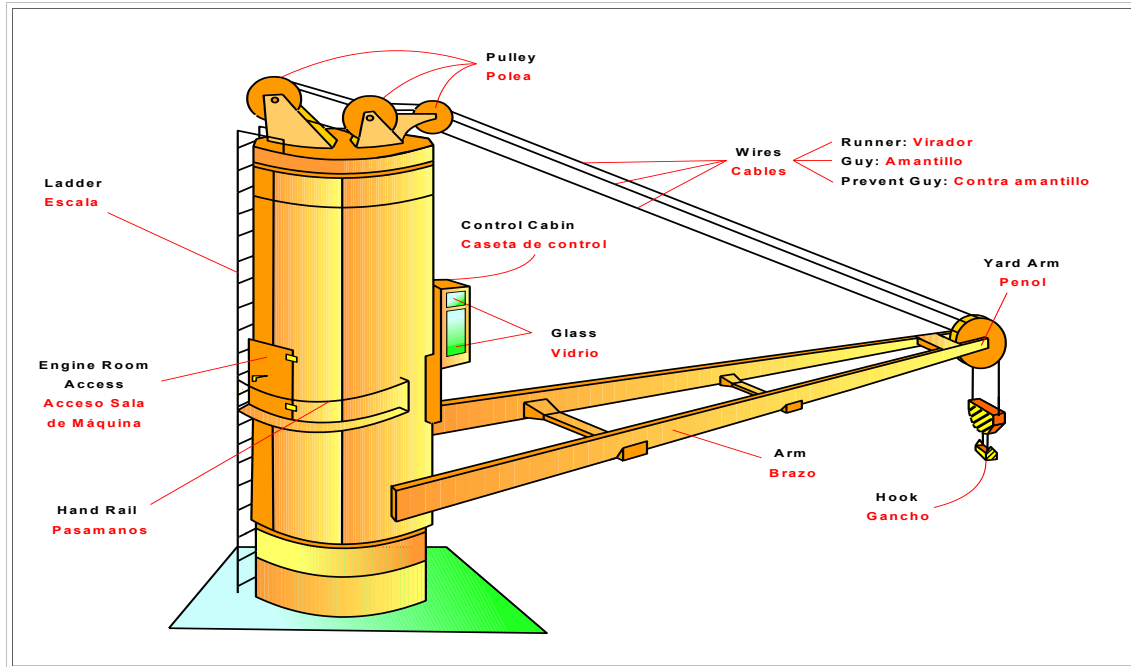
75. Hatchcover No. 5, compression bars in good conditions.



76. Hatchcover No. 5, rubber gasket in good conditions.



IX. CARGO GEAR CONDITION



CRANE/DERRICK NR. 1	G	F	P	U	Obs Nr	CRANE/DERRICK NR. 2	G	F	P	U	Obs Nr
Arm/Boom	✓					Arm/Boom	✓				
Wires	✓					Wires	✓				
Winches	✓					Winches	✓				
Controls	✓					Controls	✓				
Railings & Ladders	✓					Railings & Ladders	✓				
Hydraulic pipes	✓					Hydraulic pipes	✓				
Control Cabin Glass	✓					Control Cabin Glass	✓				

CRANE/DERRICK NR. 3	G	F	P	U	Obs Nr	CRANE/DERRICK NR. 4	G	F	P	U	Obs Nr
Arm/Boom	✓					Arm/Boom	✓				
Wires	✓					Wires	✓				
Winches	✓					Winches	✓				
Controls	✓					Controls	✓				
Railings & Ladders	✓					Railings & Ladders	✓				
Hydraulic pipes	✓					Hydraulic pipes	✓				
Control Cabin Glass	✓					Control Cabin Glass	✓				



77. Crane No. 1.



78. Another view.



79. Crane No. 2.



80. Another view.



81. Crane No. 3.



82. Another view.



83. Crane No. 4.



84. Another view.



X. BUNKER SURVEY

The following quantities were found onboard as calculated by Chief Engineer and the undersigned surveyor, from the ship's calibration curves with due considerations to the trim of the vessel, temperature and specific gravity of oil:

DRAFTS (m)	
Forward	5,85
Aft	7,46
Trim	1,61

TEMPERATURES (°C)	
Sea water	15
Engine room	26
To be corrected	15,0

Average consumption per day			
	Fuel oil		Diesel oil
Sailing	15		0,1
At port	3		0,1
Anchored	3		0,1

Last bunkering information		
Date	MAY 06, 2026	
Place	ZONA COMUN, ARGENTINA	
Specific gravity	Fuel Oil	Diesel Oil
	0,9257	

FUEL OIL Very Low sulphur										
Tank	Max sounding	Sounding cm	Correction	Sounding corrected	Volume (cbm)	Temp. °C / °F	Sp.gravity 15°C	Correction T.54B	Correction T.56	WEIGHT Metric tons
LSFO. TK. 1	1440,00	1437,00	0,00	1437,00	0,540	18,3	0,9662	0,9977	0,9651	0,520
LSFO. TK. 2	1440,00	239,00	0,00	239,00	360,070	29,7	0,9257	0,9890	0,9246	329,276
LSFO. TK. 3	882,00	881,00	0,00	881,00	1,420	27,6	0,9257	0,9906	0,9246	1,301
FO. SETT TK	G	G	G	G	20,000	102,0	0,9257	0,9342	0,9246	17,277
FO. SERV TK	G	G	G	G	15,500	108,9	0,9257	0,9289	0,9246	13,314
OVERFLOW	455,00	39,00	0,00	39,00	3,580	26,0	0,9257	0,9918	0,9246	3,283
TOTAL :										364,97

MARINE GAS OIL Low sulphur										
Tank	Max sounding	Sounding cm	Correction	Sounding corrected	Volume (cbm)	Temp. °C / °F	Sp.gravity 15°C	48 T.54B	Correction T.56	WEIGHT Metric tons
MGO. TK. 1	1157,00	36,00	0,00	36,00	0,540	15,0	0,8519	1,0000	0,8508	0,459
MGO. TK. 2	G	G	G	G	22,000	26,0	0,8699	0,9911	0,8688	18,944
MGO. TK. 3	859,00	418,00	0,00	418,00	117,810	15,0	0,8586	1,0000	0,8575	101,025
MGO. SERV TK	G	G	G	G	15,290	26,0	0,8586	0,9910	0,8575	12,993
TOTAL :										133,42



Quantities of Bunkers found at Bunker Survey time on May 31, 2026, at 11:00 hours LT (May 31, 2026, at 15:00 hours UTC):

Fuel Oil (Very Low Sulphur Fuel oil)	364.97 MT
Marine Gas Oil (Low Sulphur)	133.42 MT

Consumption of Bunkers between Delivery time and Bunker survey:

Fuel Oil (Very Low Sulphur Fuel oil)	4.75 MT
Marine Gas Oil (Low Sulphur)	0.10 MT

Quantity of Bunker at Delivery time on June 01, 2026, at 00:01 hrs LT (June 01, 2026, at 04:01 hours UTC) DLOSP, San Antonio, Chile.

Fuel Oil (Very Low Sulphur Fuel oil)	360.22 MT
Marine Gas Oil (Low Sulphur)	133.32 MT

XI. ATTENDING PARTIES

Name	Position	Company	On behalf of
Mr. Cruz Elmer Centeno	Captain	MV ULTRA FOREST	Owners
Mr. Hurtado Norberto Iv Balan	Chief Officer	MV ULTRA FOREST	Owners
Mr. Lozada Joel Nicdao	Chief Engineer	MV ULTRA FOREST	Owners
Mr. Claudio Alvear C.	Surveyor	ALS Inspection	Dampskibsselskabet Norden A/S



XII. ATTACHMENTS

- Delivery Bunker Certificate

This survey was carried out without prejudice and in the interest of whom it may concern.

Surveyor
ALS Inspection Chile Spa

Prepared by : C. Alvear
Reviewed by : J. Lopez
Validated by : J. Lopez