



INSPECTION CERTIFICATE

Shipper	: IANSAGRO S.A.
Product description	: OF CHILEAN DRIED SUGAR BEET PULP PELLETS (BPP) IN BIG BAGS OF 1.1 MT, ON PALLETS.
Tonnage	: 66,00 M/T.
Port of discharge	: MELBOURNE, AUSTRALIA.
Port of Loading	: LIRQUEN, CHILE.
Date of Stuffing	: APRIL 17, 2026.
Vessel	: MSC ORSOLA FA615R.
Place of Stuffing	: WAREHOUSE SOTRAVAL, LOS ANGELES, CHILE.
Quantity of Containers	: 03 CONTAINERS.
Supervisor	: JUAN RIQUELME.
Surveyor	: JUAN RIQUELME.
Bill of lading	: ONEYSCLG08576600.
BL date	: 23 APR 2026.

1. Generalities:

Product was found stockpiled at warehouse Sotralval, Los Angeles, Chile. Cargo was stored in maxi bags to be stuffed into containers.

Stuffing Start : On April 17, 2026, at 10:15 Hrs.

Stuffing Term : On April 17, 2026, at 12:30 Hrs.

2. Product Inspection:

Cargo visual inspection and warehouse supervision were carried out prior to commence stuffing



operation into container, cargo was noted clean and free of contaminants of any kind.

3. Stuffing of product:

Stuffing Operation was carried out into warehouse in a designated place for the activity.

Cargo loading and stuffing into container was carried out assisted by an equipment previously inspected to rule out dirt, humidity, or leaks of any kind.

Visual inspection of the containers was carried out to check their cleanliness and physical condition, where no observations were recorded.

After weighing each container in the shore scale, each one was sealed, installing the seal assigned by carrier and the **ALS** seal on the door.



1. View of product stored in the warehouse.



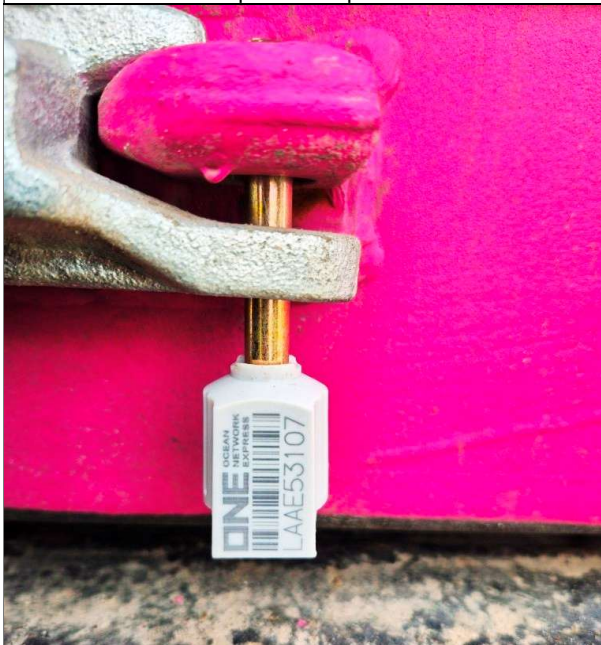
2. View of cargo stuffed into container.



3. View container lateral side, in inspection process.



4. Another view lateral panel in inspection process.



5. View Carrier seal Nr. LAE53107 on container.



6. General view of sealed container.



4. Product Weighing:

To weigh the cargo, the container loaded on the truck was weighed at the shore scale property of Sotraval Ltda. The net weight of the cargo was calculated by weighing difference.

Shore Scale calibration date is reviewed, which data from April 22, 2025 carried out by company LabMetro Laboratorio de Calibración SpA S.A.

4.1. Weighing details:

Nr	CONTAINER	GROSS WEIGHT KG	TARE KG	NET WEIGHT KG	TARE FCL KG
1	ONEU 668576-8	39.050	16.680	22.370	3.700
2	ONEU 633683-2	41.430	19.060	22.370	3.700
3	ONEU 056312-4	39.620	17.250	22.370	3.700
TOTAL:				67.110	

5. Container sealing details:

Nr	CONTAINER	SHIPPING LINE SEAL	ALS SEAL	IANSA SAG SEAL
1	ONEU 668576-8	LAAE53067	80778	0000047
2	ONEU 633683-2	LAAE53107	80779	0000048
3	ONEU 056312-4	LAAE53102	80780	0000049



6. Observations:

- 6.1 - Containers shipped to **LIRQUEN, CHILE** on April 17, 2026.
- 6.2 - Containers shipped on board the **M/V MSC ORSOLA FA615R**.
- 6.3 - Last destination to **MERLBORNE, AUSTRALIA**.
- 6.4 - During consolidate operation, a composite sample is extracted from the shipped batch for analysis.
- 6.5 - The weather was optimal for carrying out the stuffing operation.

7. Present Persons:

Name	Company	On Behalf of
Sr. Mario Avello.	SOTRAVAL LTDA.	IANSAGRO S.A.
Mrs. Cristina Alveal.	IANSA S.A.	IANSAGRO S.A.
Sr. Juan Riquelme.	ALS INSPECTION CHILE SPA	IANSAGRO S.A.

This survey was carried out without prejudice and in the interest of whom it may concern.

Surveyor
ALS Inspection Chile SpA.

Prepared by : Juan Riquelme
Reviewed by : Héctor Campos.
Validated by : Jaime López.